

24 Aug 2023

Bathers Way

King Edward Park

Community Reference Group

Meeting 1 MINUTES



**City of
Newcastle**

Meeting MINUTES

Date: 24 Aug 2023	Time: 6 pm to 8 pm	Venue: Fort Scratchley
Meeting: Bathers Way King Edward Park – Community Reference Group (CRG), Meeting 1		

Meeting objective

To present the draft concept design options for Bathers Way King Edward Park for CRG discussion. Capture CRG feedback on five key public spaces along the alignment to inform final concept design.

IN ATTENDANCE (CRG Total: 22)

Councillors

Cr Nuatali Nelmes (Cr NN) Lord Mayor

Cr Carol Duncan (Cr CD) Councillor

Community members

Margaret Ostringa (MO) Stakeholder – Friends of King Edward Park

Paul Humphreys (PH) Stakeholder – H Events

Mark Metrikas (MM) Stakeholder – National Trust

Arden Cassie (AC) Community member

Kylie Seery (KS) Community member

Jennifer Ciba (JC) Community member

Bronwyn Law (BL) Community member

Gary Foster (GL) Community member

Robert Sirasch (RS) Community member

Kate Thomson (KT) Community member

John Bogaert (JB) Community member

City of Newcastle's Committee representatives

John Merrell (JM) Infrastructure Advisory Committee

Stewart MacLennan (SM) Access Inclusion Advisory Committee

City of Newcastle Staff

Luke Jones (LJ)	Senior Project Planner
Lynn Duffy (LD)	Executive Manager Community & Recreation
Robert Dudgeon (RD)	Executive Manager Project Management Office
Patrick Burgess (PB)	Project Services Manager
Sarah Horan (SH)	Acting Project Planning Coordinator
Kersti Muras (KM)	Community Engagement Lead
Sally Ryan (SR)	Senior Adviser Communication & Engagement

Meeting Facilitators

Laurie D'Angelo Edmonds (LDE)	Spectrum Comms
Meredith Whitworth (MW)	Spectrum Comms

APOLOGIES

Cr Declan Clausen (Cr DC)	Councillor
Helen Cummings (HC)	Community member
Chair	Guraki Aboriginal Advisory Committee
Chair	Livable Cities Advisory Committee

Meeting Commenced 6.05pm

1. Welcome

LDE welcomed CRG members, City of Newcastle (CN) staff and Councillors to the CRG and introduced Spectrum Comms as the meeting facilitator.

LDE provided Acknowledgement of Country.

2. Agenda and housekeeping

LDE provided a brief run-through of the agenda and what will be covered in the first CRG:

- Round table introductions
- Terms of reference and meeting etiquette
- Project update - the journey so far
- Concept development and workshop activity
- Group reflection
- Next steps
- Final remarks

3. Introductions

LDE facilitated round table introductions. CRG members turned to the person sitting next to them to get to know each other and why they are involved in the CRG. CRG members then introduced each other to the broader group.

Lord Mayor Cr Nuatali Nelmes provided additional Acknowledgement of Country and a personal introduction and background to the significance of the project for the city. Lord Mayor noted Deputy Lord Mayor apologies.

4. CRG update

Member and staff changes

LJ acknowledged Matt Blandford's significant involvement in the project to date. LJ will be the Senior Project Planner on the project going forward.

Terms of reference and meeting etiquette

LDE provided a recap of the role of the CRG and asked everyone to take the opportunity to listen to each other whether they agree or disagree with their ideas. Everyone was asked to keep an open mind and challenge each other respectfully. Hard copies of the Terms of Reference were made available to CRG members during the meeting as requested.

The objective of the CRG is to:

- Contribute to the planning of the facilities that balance the needs of current and future Bathers Way users.
- Facilitate the sharing of information between the project team and broader community. This includes sharing information about project objectives, status and outcomes with the community and informing the project team of any feedback that community members share.

The CRG member responsibilities are:

- Provide information on current usage and areas for improvement of Bathers Way infrastructure within King Edward Park
- Provide feedback to City of Newcastle (CN) on proposals
- Provide information and updates to the community
- Represent your stakeholder/user group (where applicable)

5. Project Update – The Journey so Far

LJ provided a project update to CRG members, including the project background and journey to date.

The Project to date

The project timeline to date includes:

- 2014 – Preliminary concept produced
- 2019 – CRG generally supported the concept with feedback for changes provided
- 2021 – State Heritage Listing – SHR No.02000
- 2022 – Advice received from various CN Committees including Access Inclusion and Guraki
- 2023, January – Tenders called for the Bathers Way design through the park
- 2023, February – CRG membership advertised and renewed
- 2023, February–April – Preliminary investigations, site analysis, due diligence assessments
- 2023, April–Now – Concept design - CRG 1 80% Concept Design

Project Objectives

The project objectives are to:

- Deliver the Bathers Way shared path through the park linking the previously completed Bathers Way sections.
- Improve connectivity between park features.
- Improve visitor experience with new shade shelters and viewing platforms.
- Complement and enhance the enjoyment of the park's heritage features.
- Renew the toilet amenities – improve safety and visitor experience.
- Upgrade all infrastructure along the route (stormwater, road, retaining walls).
- Improve accessibility to key park features where possible (e.g., disabled access to Garside Gardens).
- Protect and enhance the Themeda Grasslands.

Project Challenges

The alignment of the path and the project is constrained by the following:

- Topology – significant height changes across the park.
- Location of Norfolk Island Pines and the desire for broader tree retention.
- Themeda Grassland extent.
- State Heritage impact – look and feel, vistas and contrast, Aboriginal and European heritage.
- Parking adjustments.
- Electricity and sewer supply to the park.

LJ opened the floor to questions.

6. Questions

Question: SM - How long is the pathway?

Answer: LJ - Approximately 1.2 km.

7. Workshop Activity

Five posters exhibiting the concept areas were circulated for group break out discussion.

Each CRG member was provided the opportunity to provide feedback on all concepts.

Feedback is captured on posters.

Following the activity participants nominated a spokesperson from each group who reported conversation highlights back to the CRG.

Feedback

Concept area	Supports	Considerations
Concept Rest Area, South Newcastle & Bogey Hole	<p>Support dense landscaping for safety at cliff edge.</p> <p>No objections to having seating.</p> <p>Acknowledgement that the path must be here as it works for geometry and topography of the space.</p>	<p>Can shade area be provided as you move up the hill?</p> <p>Consideration – the shade structure could be an eyesore, but on the other hand, it may encourage the community to use the space.</p> <p>Will the shade structures look the same as those at Bar Beach? Opinion is divided about the visual impact of shade structure. This will block a key view.</p> <p>Is lighting being considered for safety and to discourage anti-social behavior?</p> <p>Make this an activated space that encourages you to stop, rest and appreciate the views.</p>

Concept area	Supports	Considerations
		<p>Can the rest area be moved?</p> <p>More visitors to the Bogey Hole means increased likelihood of issues and challenges. Need to consider lifeguard resourcing, access, first aid, emergency response.</p> <p>Realistically, earth works are costly and budget considerations need to be considered.</p> <p>Can artwork add to the space?</p>
Amenities & Accessible Routes	<p>Amenities look better than the existing, nestled in landscape.</p> <p>New amenities concept is supported.</p> <p>Ok with less parking overall.</p> <p>Importance of seating and rest stops.</p>	<p>Dislike external wash basins. Preference is for wash basins inside toilets.</p> <p>Suggested inclusion of seating on viewing platform (like Newcastle Beach kiosk).</p> <p>If the restrooms open to the handwash area, suggestion of a screen for modesty – perhaps featuring a local Indigenous artwork.</p> <p>Importance of visibility of amenities from the playground.</p> <p>In the changing places, grab rails are needed to enable access, are these visible on the floor plan?</p> <p>Suggestion of automatic door with push button and possibly engage an accessibility consultant.</p> <p>Concerns about the amount of parking spaces proposed.</p> <p>What is the best route for cyclists?</p> <p>Can cyclists be separated from foot traffic to avoid congestion?</p> <p>Will cyclists be using the existing roadway or a separate pathway?</p> <p>Are existing pathways staying?</p>

Concept area	Supports	Considerations
		What are the parking restrictions, and do they consider the recreational use of the area?
Rotunda Lawn to Garside Gardens Connection	<p>Landscaping platform above storage shed is a good idea.</p> <p>Good passive surveillance.</p> <p>Approve of seating on platform.</p>	<p>What considerations are given when calculating the limit to parking time?</p> <p>Access to grass is an important consideration.</p> <p>Raised threshold is better for runners and cyclists.</p> <p>Suggested idea of a walking event to celebrate the opening of the updated park.</p> <p>Please show the location of water stations throughout this area.</p> <p>Heritage query about level of fill required – this looks to be a significant intervention.</p> <p>Signage strategy and scientific informational signs.</p> <p>Photo stations at lookouts.</p> <p>What are the lighting designs for the space?</p> <p>Limit vehicular access to grass wherever possible.</p> <p>1:20 ramp gradient of concern to ‘no turn.’ More clarification about accessibility is required.</p>

7. Group reflection and Next Steps

CRG members were provided the opportunity to reflect on the feedback provided by each of the groups.

LJ commented that following the constructive conversation tonight, there will be further concept development. 3D renders will be shown to the CRG before the wider public.

- Pre-lodgment meeting with Heritage NSW
- Traffic committee
- Broad community consultation
- Next CRG to be scheduled in response to community consultation deliverables.

9. Final remarks

LJ offered some final remarks, thanking everyone for their time.

LDE encouraged participants to complete feedback form. Lynn Duffy and Robert Dudgeon thanked the group for their time and feedback.

Questions

Question: MO - Friends of King Edward Park would like to see the maps outside of the CRG meeting and have time to absorb the information presented. Would like ten days and the ability to send feedback after the event.

Answer: LJ – Confirmed that the feedback from the meeting will now inform further concept development. 3D renders will be shown to the CRG before the wider public.

10. CRG Meeting closed 8.08pm

Attachment – Agenda

Bathers Way King Edward Park Community Reference Group

Agenda – Meeting 1

Date: Thursday 24 August 2023	Time: 6pm to 8pm	Venue: Fort Scratchley
Meeting Objective: To present the draft concept design options for Bathers Way King Edward Park for CRG discussion. Capture CRG feedback on five key public spaces along the alignment to inform final concept design		

Invited Attendees

Cr Nuatali Nelmes	Lord Mayor
Laurie D'Angelo Edmonds	Spectrum (Facilitator)
Margaret Ostinga	Stakeholder - Friends of King Edward Park
Paul Humphreys	Stakeholder - H Events
Mark Metrikas	Stakeholder - National Trust
Arden Cassie	Community member
Kylie Seery	Community member
Jennifer Ciba	Community member
Bronwyn Law	Community member
Gary Foster	Community member
Robert Sirasch	Community member
Helen Cummings	Community member
Kate Thomson	Community member
John Bogaert	Community member

CN Advisory Committee Members

John Merrell	Infrastructure Advisory Committee
Representative	Access Inclusion Advisory Committee
Representative	Liveable Cities Advisory Committee
Representative	Guraki Aboriginal Advisory Committee

City of Newcastle Project Representatives

Luke Jones	Senior Project Planner
Lynn Duffy	Executive Manager Community & Recreation
Duncan Manderson	Acting Executive Director City Infrastructure
Robert Dudgeon	Executive Manager Project Management Office
Tammara Ward	Executive Manager Assets & Facilities
Nick Kaiser	Interim Executive Manager Media Engagement Economy & Corporate Affairs
Patrick Burgess	Project Services Manager
Charlene Wellard / Sarah Horan	Acting Project Planning Coordinator
Rachel McConkey	Open Spaces Manager
Kersti Muras	Community Engagement Lead

Bathers Way King Edward Park
Community Reference Group

Agenda Items

Item	Topic	Responsibility	Time
1	Welcome	Facilitator / Lord Mayor	6:00 pm 5 mins
2	Agenda and housekeeping	Facilitator	6:05 pm 5 mins
3	Introductions and apologies Round table introductions	Facilitator / All	6:10 pm 10 mins
4	CRG Update Member and staff changes Terms of Reference – recap of role of the CRG	Facilitator / Luke Jones	6:20 pm 5 mins
5	Project Update Project background The journey so far Project objectives and challenges	Luke Jones	6:25 pm 15 mins
6	Presentation recap and questions	Facilitator	6:40 pm 5 mins
7	Workshop activity Presentation of design options Group 'break out' discussions Report back and group reflection on feedback	Facilitator / Luke Jones / All	6:45 pm 60 mins
8	Next Steps	Luke Jones	7:45 pm 10 mins
9	Final remarks / reflection	Facilitator / Lord Mayor / CN representative	7:55 pm 5 mins
10	CRG Meeting Closed	Facilitator	8:00 pm

Next Meeting: To be confirmed

Attachment – Presentation Slides

Bathers Way – King Edward Park Community Reference Group Meeting 1

24 August 2023



Acknowledgement of Country

We all sit on Awabakal and Worimi land
'Niirun Yalawa Awabakal and Worimi burrei'

City of Newcastle (CN) acknowledges its Local Government Area (LGA) sits within the Country of the Awabakal and Worimi peoples. We acknowledge that Country for Aboriginal peoples is an interconnected set of ancient relationships. We acknowledge the custodianship of the Awabakal and Worimi peoples and the care and stewardship they have performed in this place since time immemorial.

Always was, always will be Aboriginal land
'Wunyibu wunyibu warra wunyibu wunyibu kuumba
Guuri burrai'



Agenda & Housekeeping

- Introductions
- Terms of reference and meeting etiquette
- The journey so far
- Stage 2 development and workshop
- Group reflection
- Next steps
- Final remarks



Introductions

- Elected Councilors
- Facilitators
- City of Newcastle (CN)
- Community Reference Group (CRG) Members





Terms of Reference and Meeting Etiquette

The purpose of the CRG is to enable two-way communication and engagement between City of Newcastle (CN) and community representatives as CN develops concept plans for the Bathers Way – King Edward Park upgrade.

The objective of the CRG is to:

- Contribute to the planning of facilities that balance the needs of current and future Bathers Way users.
- Facilitate the sharing of information between the project team and broader community. This includes sharing information about project objectives, status and outcomes with the community and informing the project team of any feedback that community members share.



Terms of Reference and Meeting Etiquette (Cont.)

The CRG member responsibilities are:

- Provide information on current usage and areas for improvement of Bathers Way infrastructure within King Edward Park
- Provide feedback to City of Newcastle (CN) on proposals
- Provide information and updates to the community
- Represent your stakeholder/user group (where applicable)





The Project to Date

The project timeline to date includes:

- 2014 – Preliminary concept produced
- 2019 – CRG generally supported the concept with feedback for changes provided
- 2021 – State Heritage Listing – SHR No.02000
- 2022 – Advice received from various CN Committees including Access Inclusion and Guraki
- 2023, January – Tenders called for the Bathers Way design through the park
- 2023, February – CRG membership advertised and renewed
- 2023, February–April – Preliminary investigations, site analysis, due diligence assessments
- 2023, April–Now – Concept design



Project Location



Project Objectives

The project objectives are to deliver:

- The Bathers Way shared path through the park linking the previously completed Bathers Way sections
- Improve connectivity between park features
- New shade shelters and viewing platforms
- Complement and enhance the enjoyment of the park's heritage features
- Renew the toilet amenities – improve safety
- Upgrade all infrastructure along the route (stormwater, road, retaining walls)
- Improve accessibility to key park features where possible (e.g., disabled access to Garside Gardens)
- Protect and enhance the Themeda Grasslands



Project Challenges

The alignment of the path and the project is constrained by the following:

- Topology – significant height change across the park
- Norfolk Island Pine retention
- Themeda Grassland extent
- State Heritage impact – look and feel, vistas and contrast, Aboriginal and European heritage
- Parking adjustments
- Electricity and sewer supply to the park



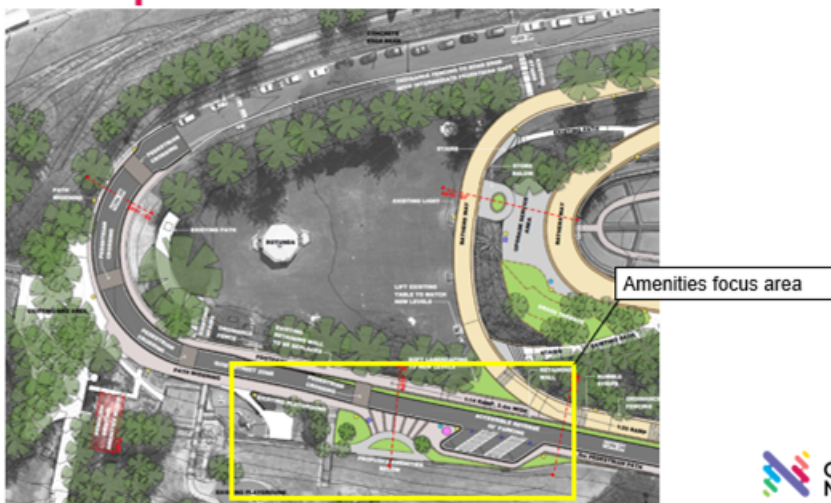
Concept Overview



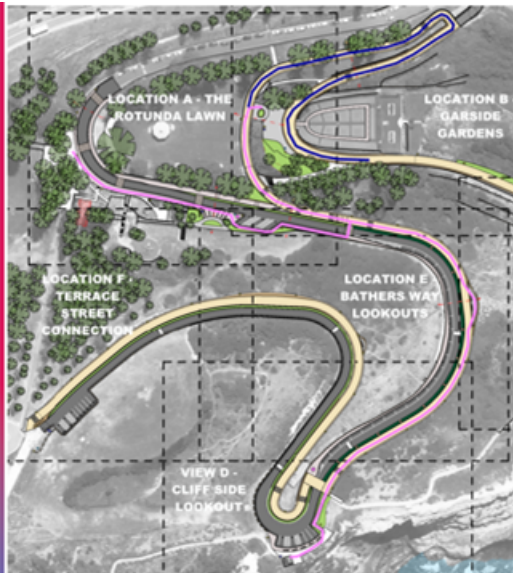
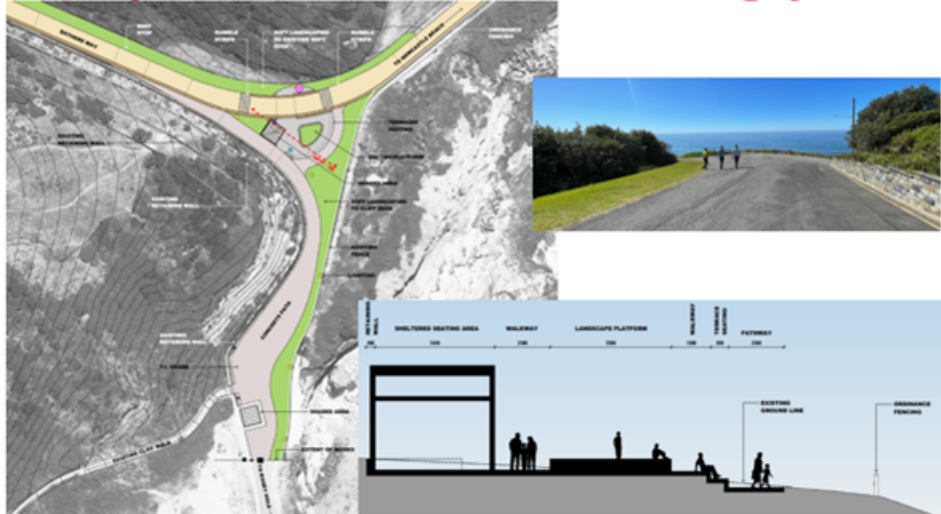
Concept – Rest Area



Concept - Amenities



Concept – Sth Newcastle and the Bogey Hole



Accessible Routes Current Concept

- Accessible (to standards)
- Still in design

Workshop Activity

- Over to you – tell us what you like and don't like about each area
- Get creative – you can write, draw on the layout options
- Report back – nominate a spokesperson to share your group feedback



Group Reflection

- Were there any surprises for you from your group discussion?
- Has the discussion changed your views on the proposed options?
- Any key themes raised by your group?



Next Steps

- Further concept development
- Pre-lodgement meeting with Heritage NSW
- Traffic committee
- Broad community consultation
- Next CRG to be scheduled in response to community consultation deliverables



Meeting facilitated and minutes prepared by:

SPECTRUM COMMS.



**City of
Newcastle**