

Agenda

Program

Project Precincts

Foreshore Park

Playspace Update

Tug Berth Lane

Railshed Opportunities

Cultural Heritage Walk

- break -

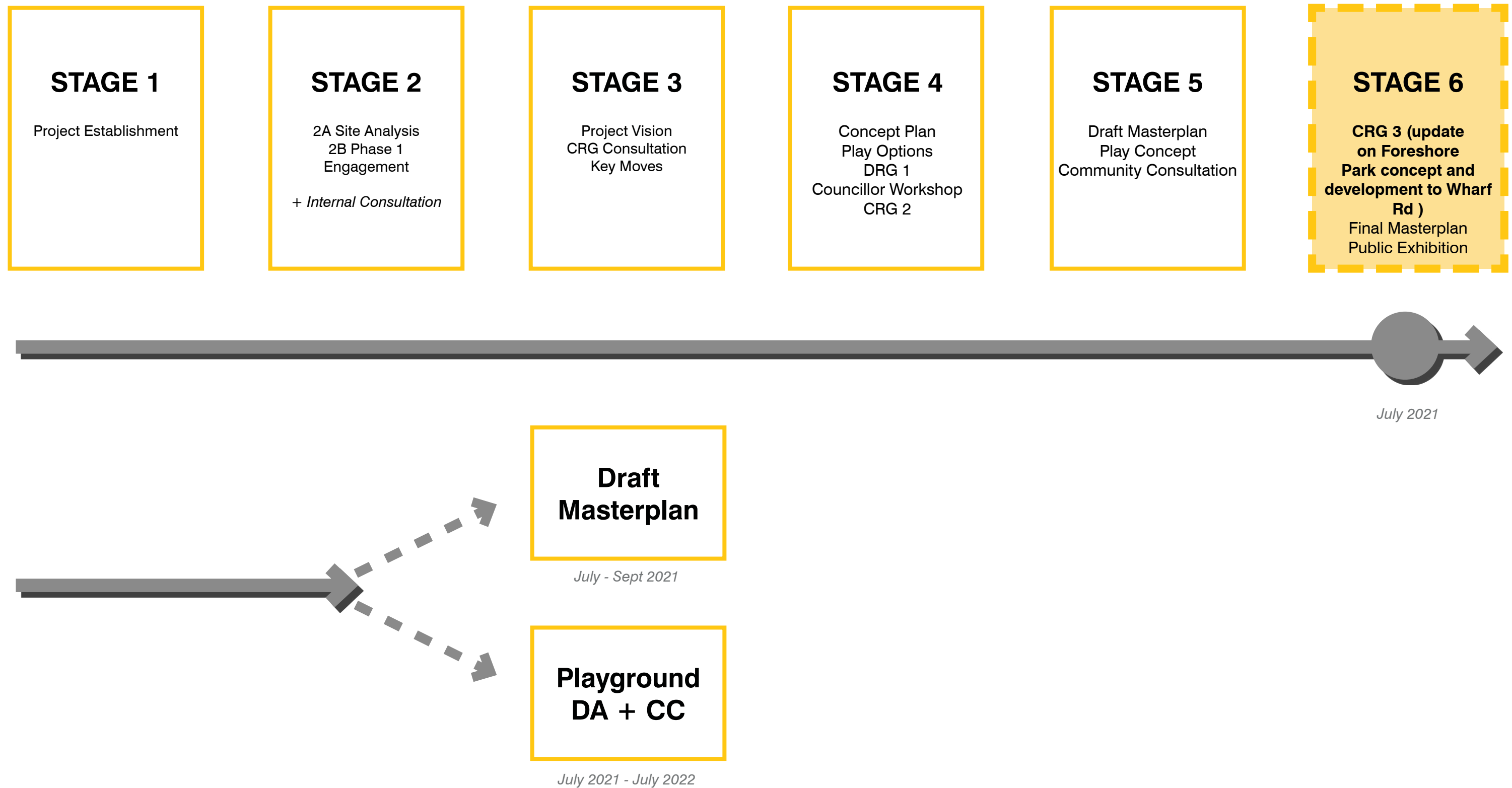
Wharf Road Precinct

Proposed Promenade Condition

Lynch's Prawn Hub

Scratchleys Entrance

Program



Project Precincts



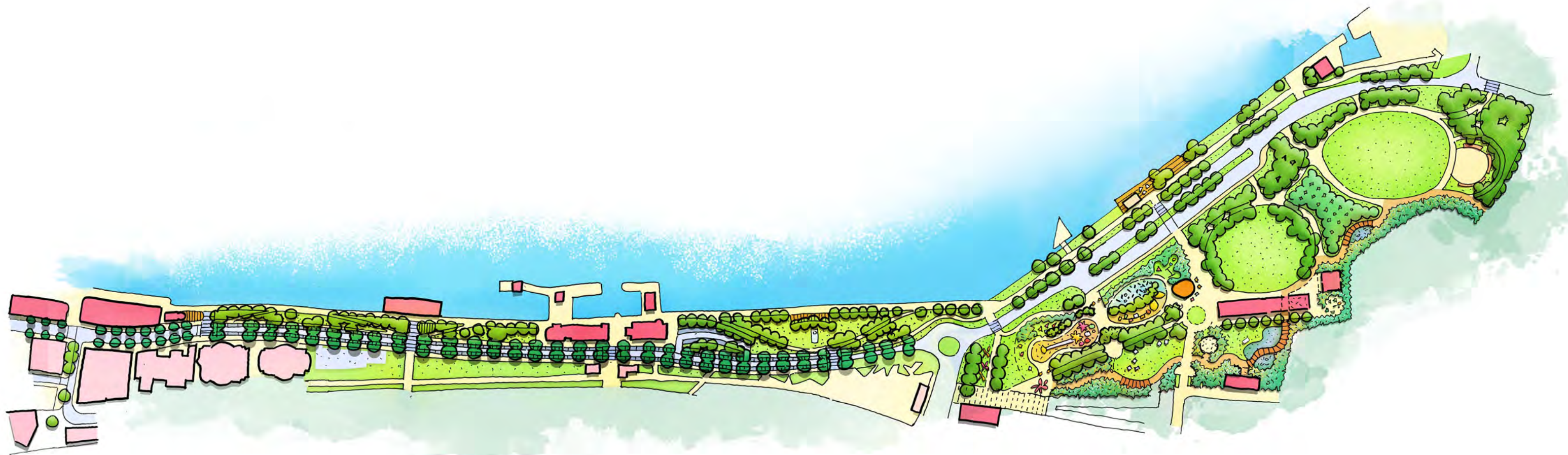
Wharf Road Precinct

- High level analysis undertaken.
- Principles and key design moves identified
- Concepts developed for key nodes inclusive of Lynches Hut and Scratchleys restaurant
- **We have received outcomes of the *Cycling and Parking Plans* and *Streets as Shared Spaces Trial***
- **And have prepared Plans, Key Location Plans and Sections**

Foreshore Park Precinct

- High level analysis undertaken.
- Principles and key design moves identified
- Development of Foreshore Park structure and precincts
- Concept design of integrated playspace and adjacent precincts
- **Phase 2 consultation undertaken on concept design for Foreshore Park and Playspace.**
- **Since then, we have updated Foreshore Park concept and Playspace**

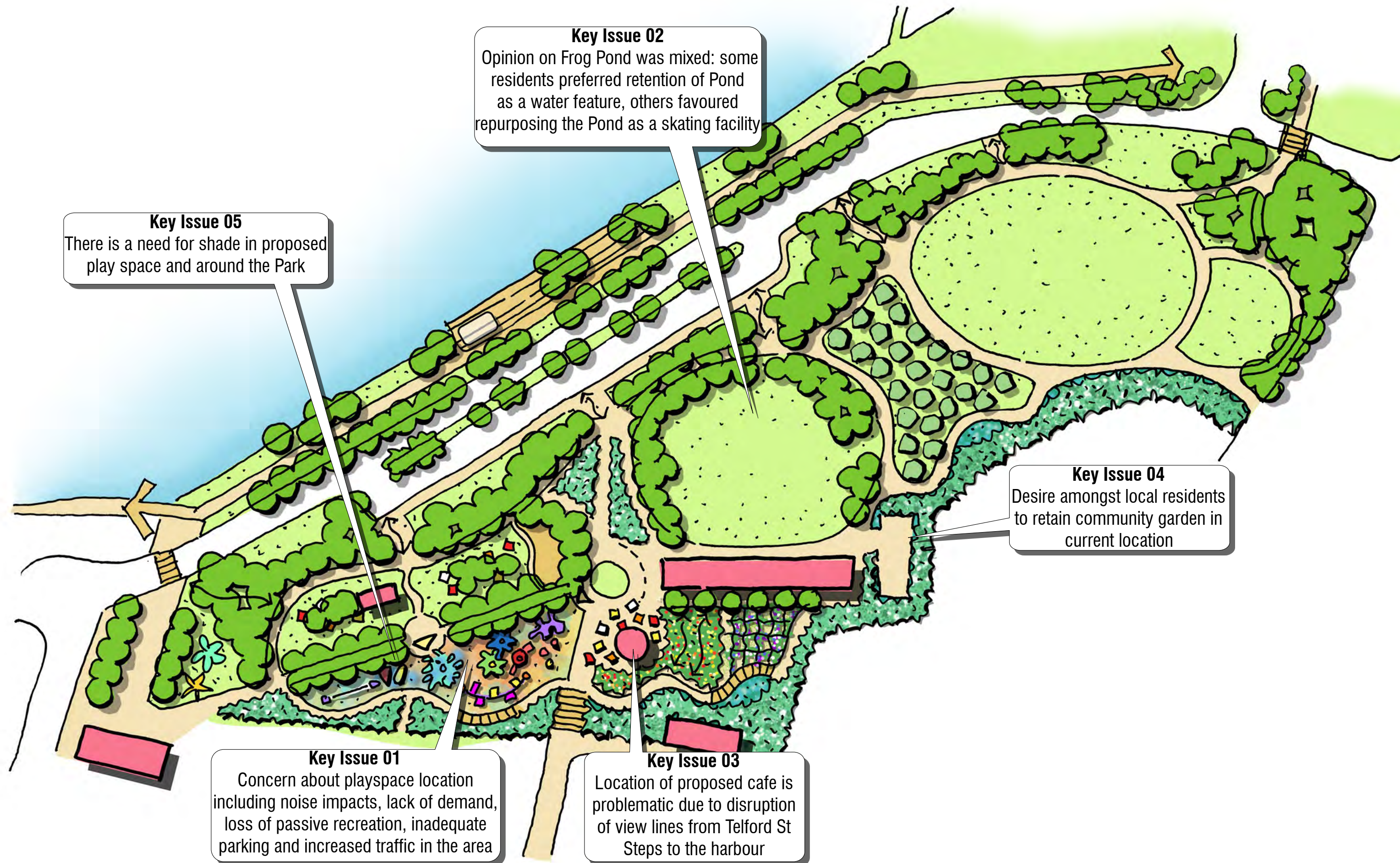
Newcastle HFMP Masterplan Concept



WHARF ROAD PRECINCT

**FORESHORE PARK
PRECINCT**

Community Consultation Feedback Summary



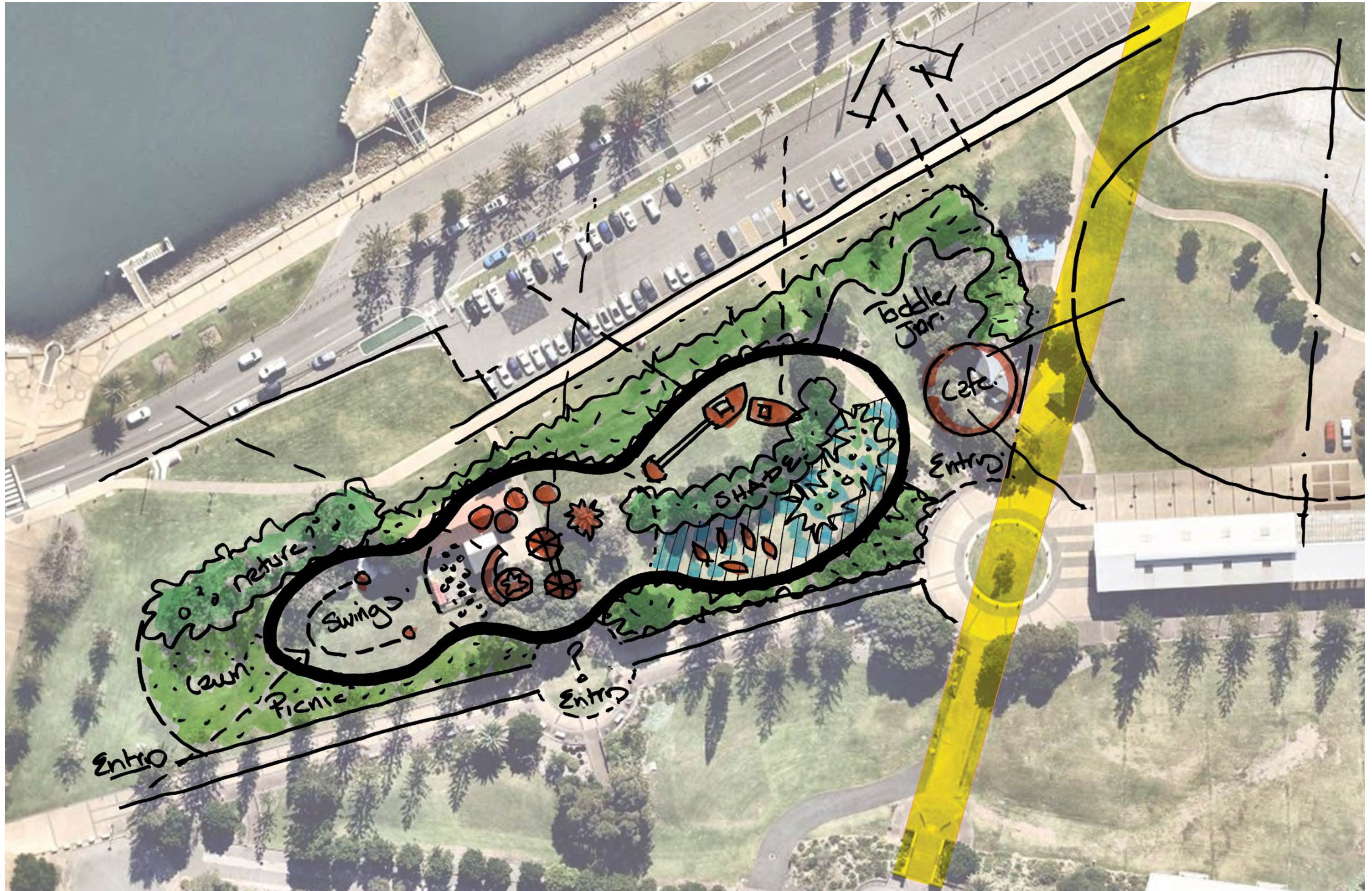
Foreshore Park Revised Concept Plan

Key Changes

- Playspace relocation adjacent car park.
- Centralised amenities with optional cafe/kiosk.
- Cultural Heritage Walk - initial consultation and ideas.
- Roller and Scooter hardstand to Shortland Lawn amphitheater.
- Customs Forecourt and Bond Street connections.
- Connection to Tug Berth Lane Parkland



Relocated Playspace Proposed Concept



Relocated Playspace Proposed Concept

- | | | |
|--------------------------------|----------------------------------|----------------------|
| ① Entry | ⑧ Awabakal Canoes and Water Play | ⑭ Cafe and Amenities |
| ② Shaded Junior Play | ⑨ Tug Boat | ⑮ Pump Room |
| ③ Water Sluice/Pump Play | ⑩ Tree Top Walk | ⑯ Flying Fox |
| ④ Trampolines | ⑪ Quiet Space | |
| ⑤ Senior Play | ⑫ Arbour | |
| ⑥ Swing set | ⑬ Main Circuit Path | |
| ⑦ Sea Fern Maze and Splash Pad | | |



Tug Berth Lane Existing Condition



Tug Berth Lane Proposed Condition A



Tug Berth Lane Proposed Condition B



Key Plan



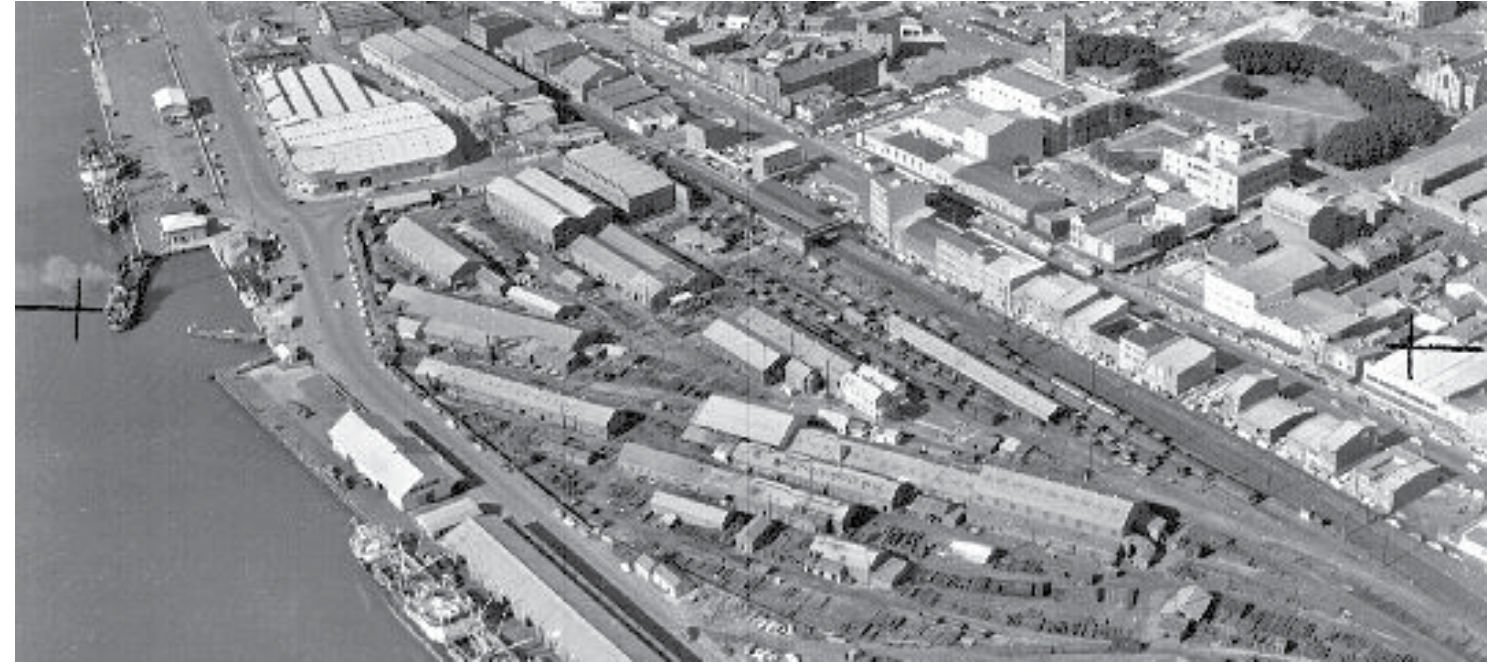
Multi-Purpose Rollerskating Area



Customs House Plaza



Post-Colonial Heritage Story



Customs House Plaza Icons



Cultural Heritage Walk Initial Brief

- Convey, represent and interpret stories and principles of the Awabakal and Woorami
- Design to be a collaborative partnership
- Aligned along original shoreline
- Provision of spaces for meeting, celebration, events, learning and cultural exchange
- Provide landscapes for story telling and interpretation
- Integrates WSUD principles
- Potential to form part of significant events such as NAIDOC week
- Connected to overall Foreshore Park circulation
- Safe, generous in proportions and well-lit



ORIGINAL SHORELINE

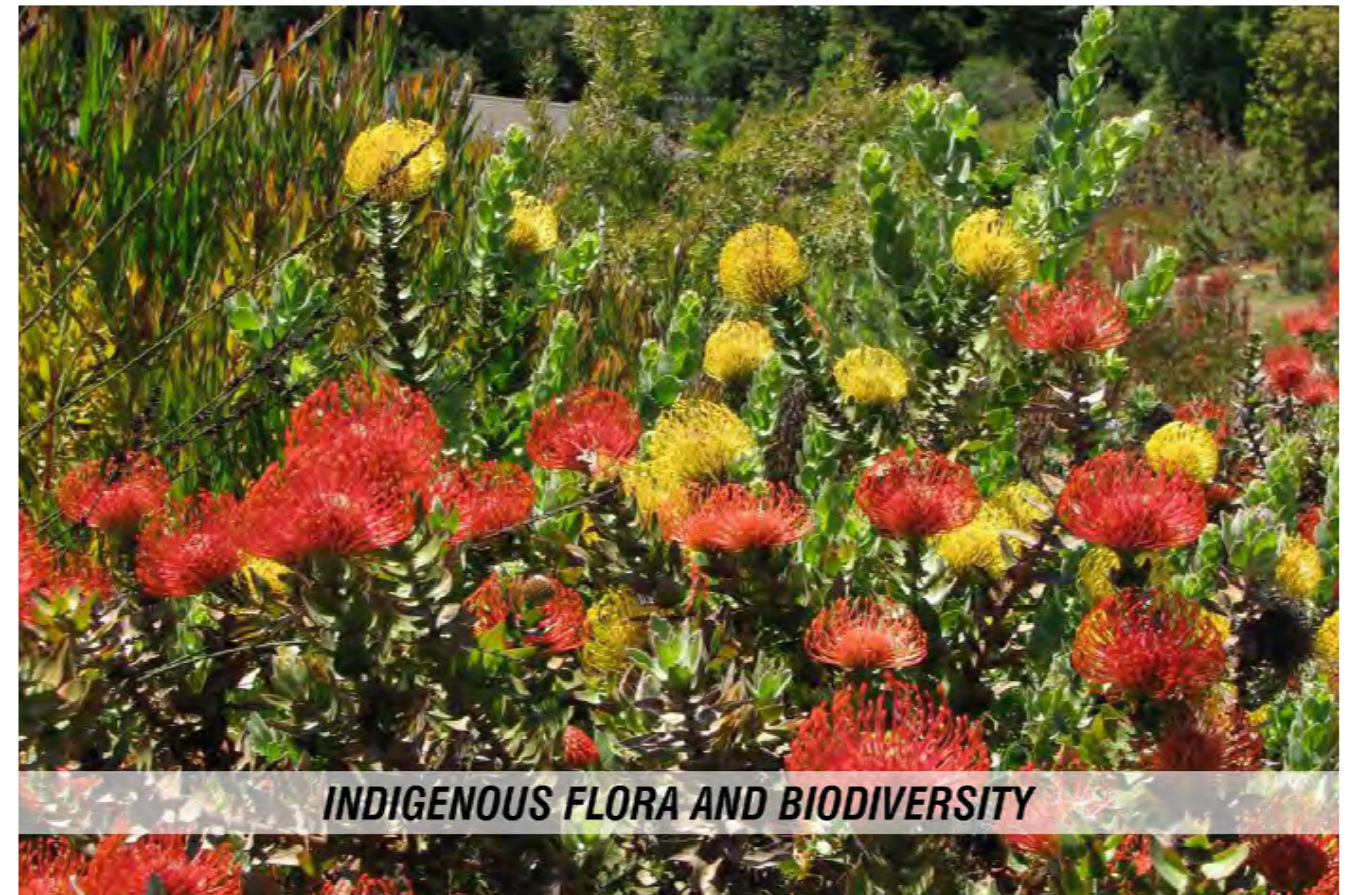
Cultural Heritage Opportunities



Cultural Heritage Opportunities



CARING FOR COUNTRY



INDIGENOUS FLORA AND BIODIVERSITY



MEETING



FIRE STORIES

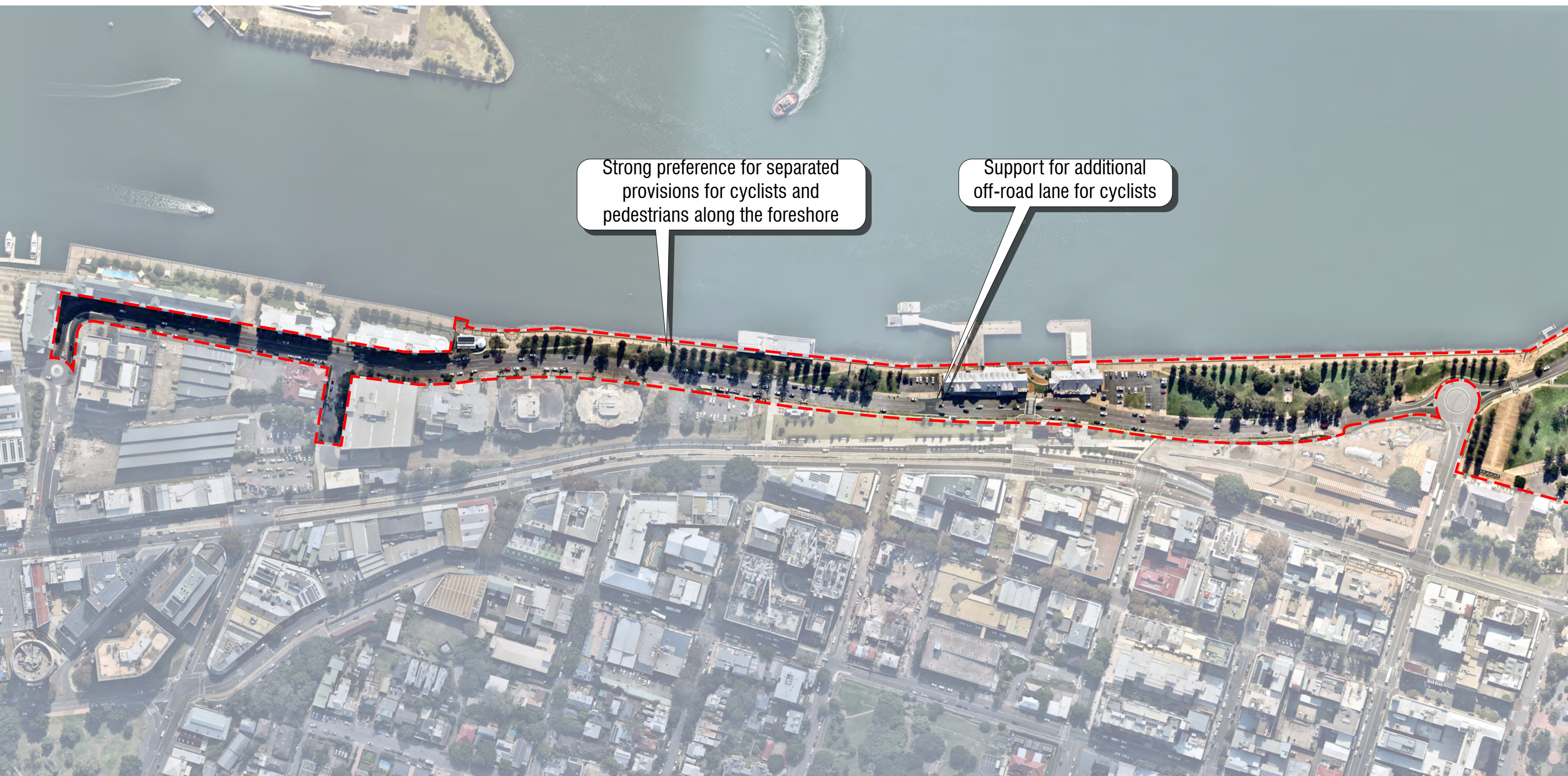
Cultural Heritage Walk Location and Elements



Wharf Road Brief

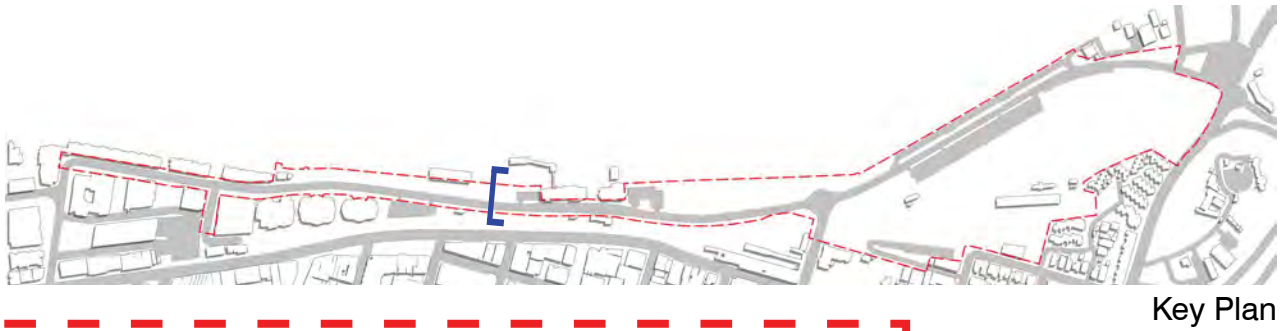
- Better connections to the CBD
- Improve cycleways to remove pedestrian conflicts
- Wharf Road as a great waterfront esplanade
- Connected to ocean and Bathers Way
- Integrate carparking within the landscape
- Reflecting site histories
- World class promenade
- Link the promenade to active nodes
- Better harbour engagement
- Retention of significant trees wherever possible
- Accommodate events (such as triathlons)

Community Feedback Summary



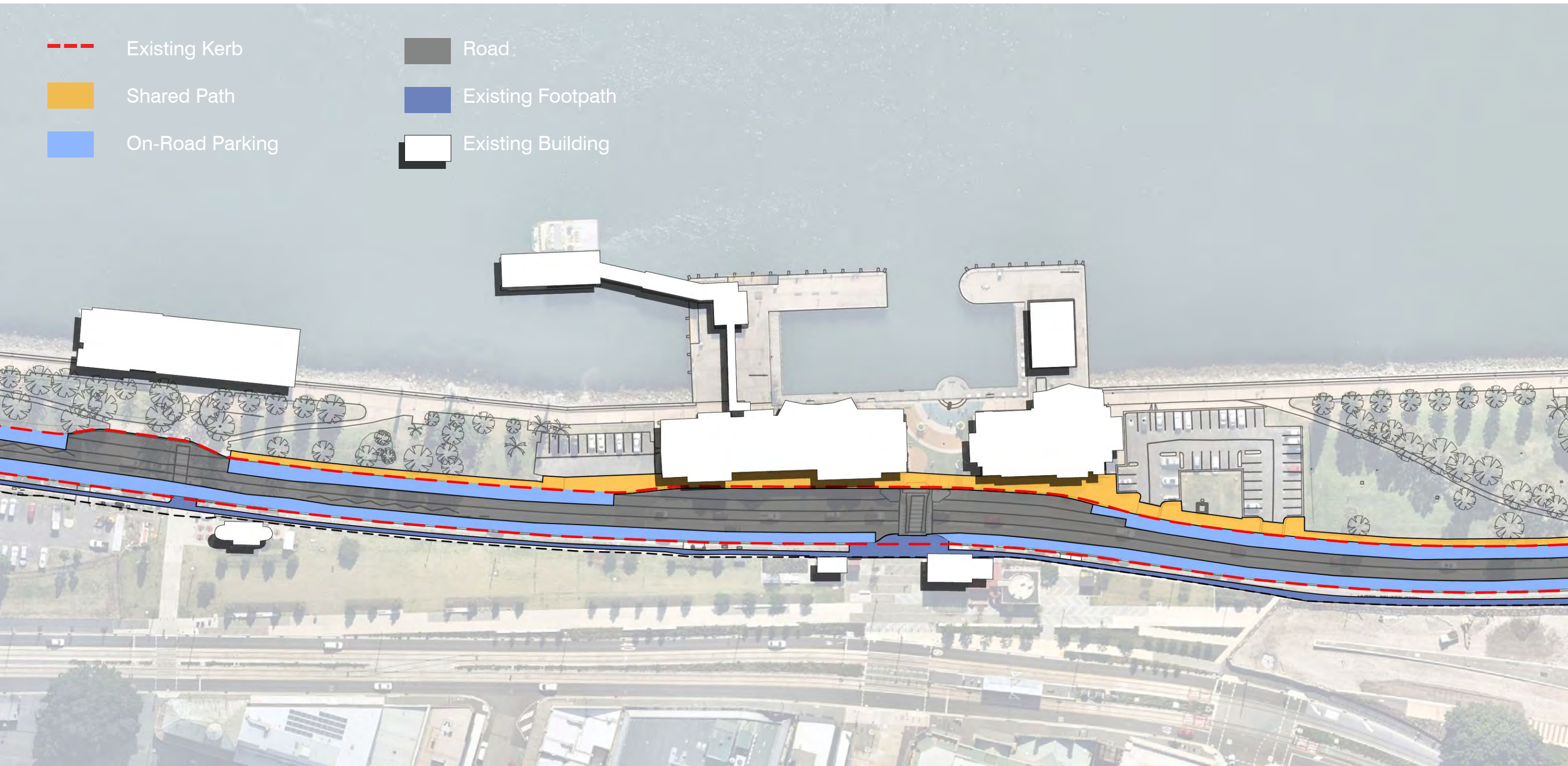
Typical Wharf Road Existing Condition

Cross Section



Wharf Road Existing Conditions

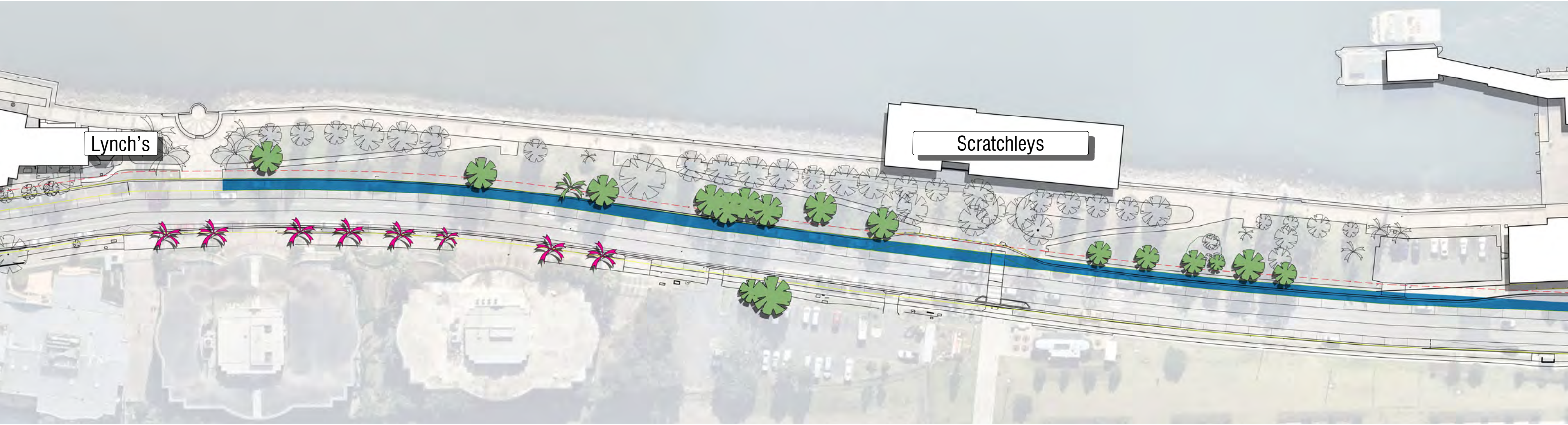
Functional Conditions



Typical Wharf Road Proposed Condition

Proposed 3m Shared Path Tree Impact

- 2m Wide Path Extension
- 3m Wide Shared Path
- Trees to be replaced with Avenue Tree Planting
- Building
- 5m Path Extent



Scale 1:1000 @A3

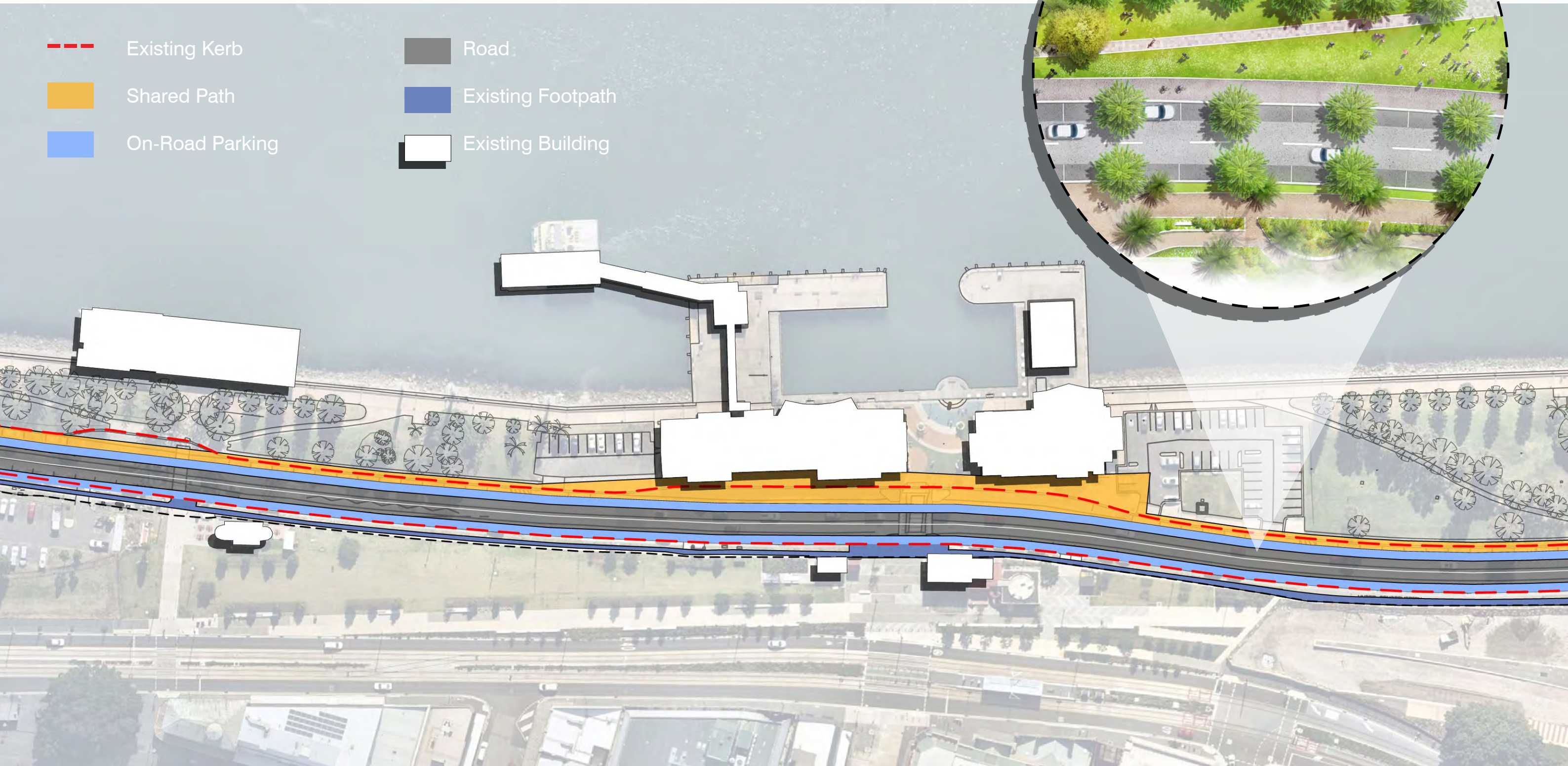
Typical Wharf Road Proposed Condition

5m Shared Path Tree Impact

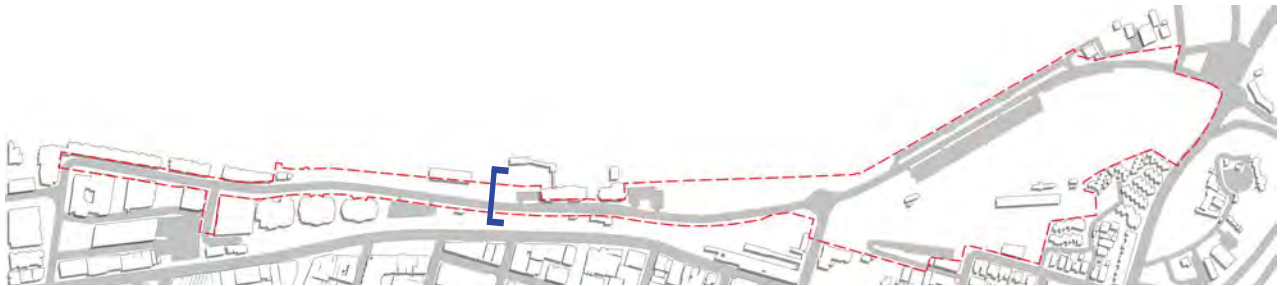
- 2m Wide Path Extension
- Anticipated Low Impact
- Trees to be replaced with Avenue Tree Planting
- Anticipated Medium Impact
- Anticipated High Impact



Wharf Road Initial Testing Functional Diagram



Typical Wharf Road Proposed Condition Cross Section



Key Plan

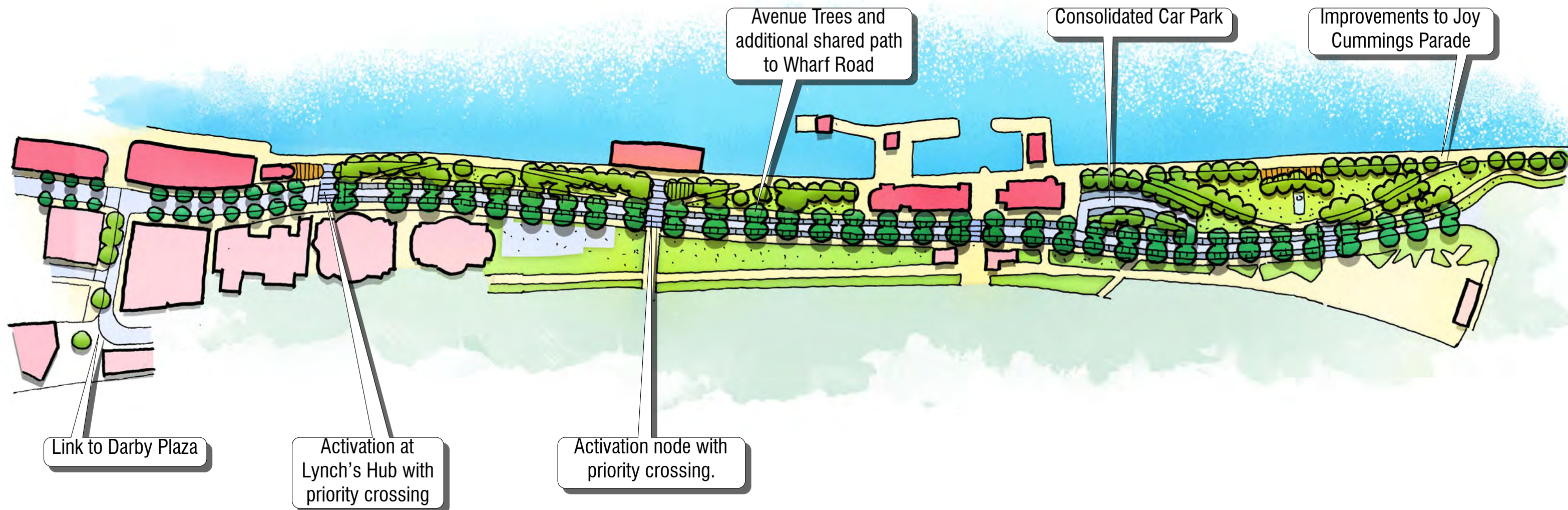


Wharf Road Masterplan Concept

Key Components

- Reconfiguration of Joy Cummings Promenade to increase user experience
- Conflicts removed along Promenade at Lynch's Hub and the crossing near Scratchleys restaurant
- A dedicated shared pathway to Wharf Road for cyclists.
- Avenue trees to Wharf Road
- Consolidated off-road parking
- Improved links to Darby Plaza and Civic.

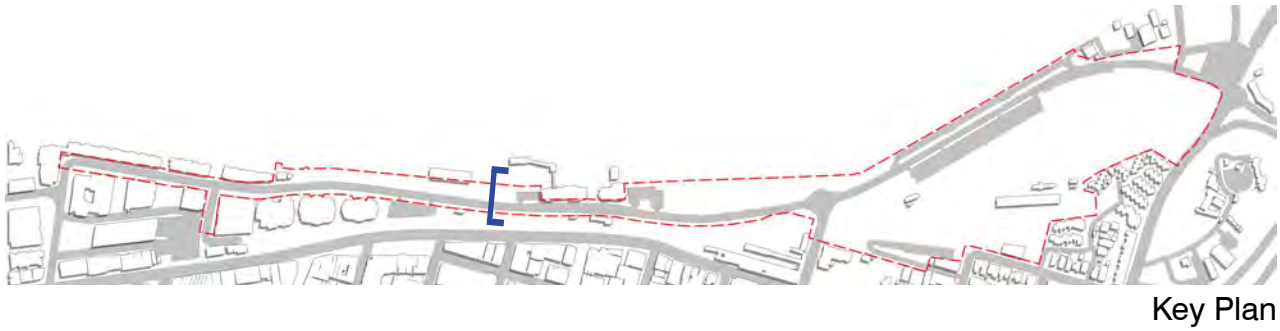
**Works to be staged and at time of asset renewal*



Typical Foreshore Proposed Condition Cross Section



Typical Promenade Existing Condition Cross Section



Key Plan



Typical Promenade Proposed Condition Cross Section



Key Plan



Lynch's Prawn Hub Proposed Condition



Scratchleys Entrance Existing Condition

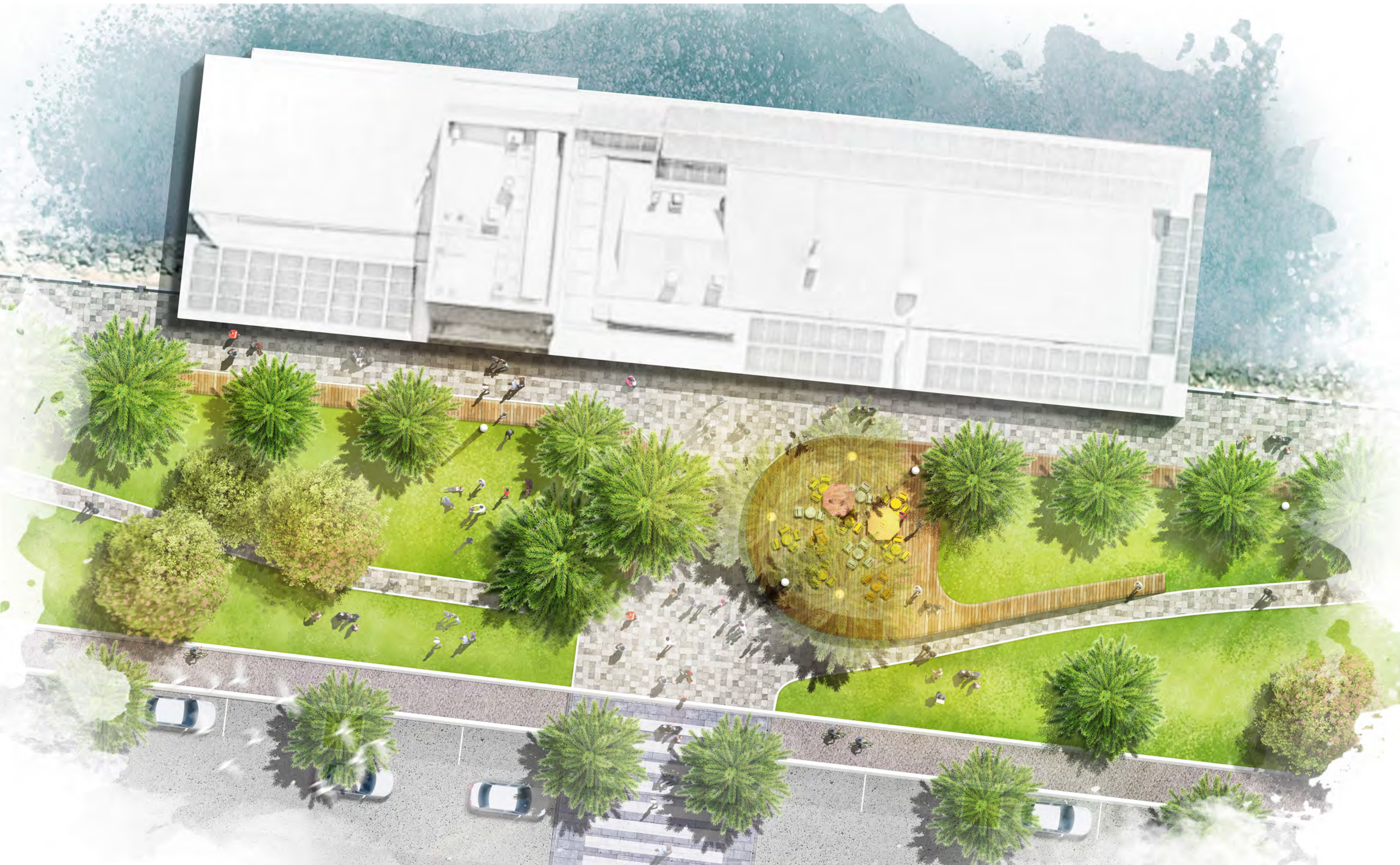


5000
Promenade

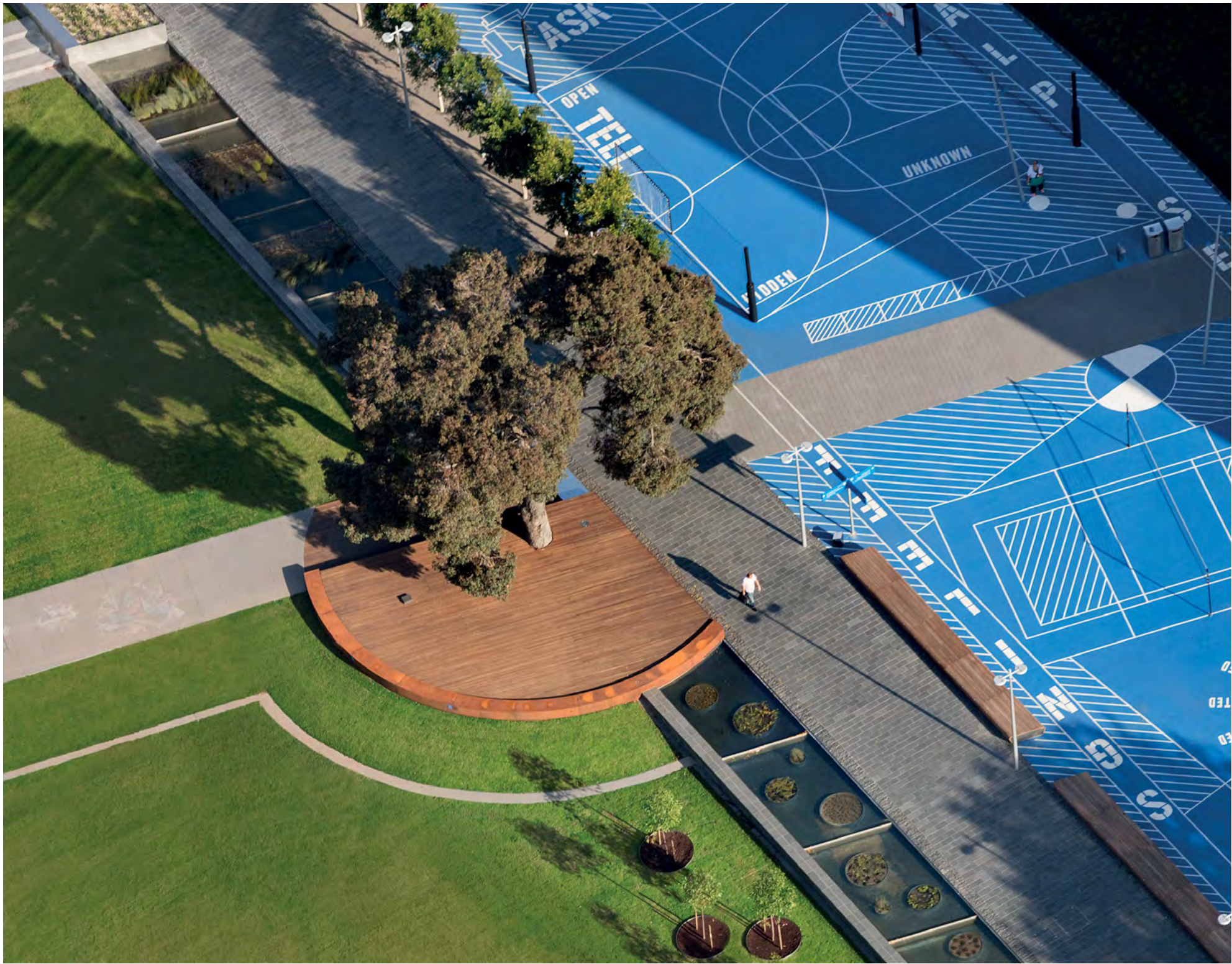
Scratchleys Entrance Proposed Condition



Scratchleys Entrance Proposed Condition



Tree in Deck Detail Example



Lighting Options

