

Newcastle Ocean Baths Community Reference Group Meeting 3

19 August 2020

Meeting Protocols

- Technology checks – audio, video, chat function
- Ask questions throughout presentations via the Chat Room
- Opportunity to answer questions at the end of Project Update

Agenda

- Welcome
- Apologies
- Since we last met
- Project Update
 - Stage 1 works *(including group discussion)*
 - Stage 2 upcoming site investigations
- Draft updated Terms of Reference
- Questions
- Next Steps



Apologies

- Attendees
- Apologies

Broad community input on ideas and improvements

Areas & ideas on improvements

CRG Focus Groups

Learning more about what these improvements might look like

We are here

CRG co-design workshops

Development of 2-3 concept designs

Broad community feedback on concept designs

Preferred concept design(s)

CRG concept refinement

Refining the preferred concept design(s)

Public exhibition

Sense-check on the preferred concept design(s)

Stage 1 in-depth

Project Stages

Stage 1

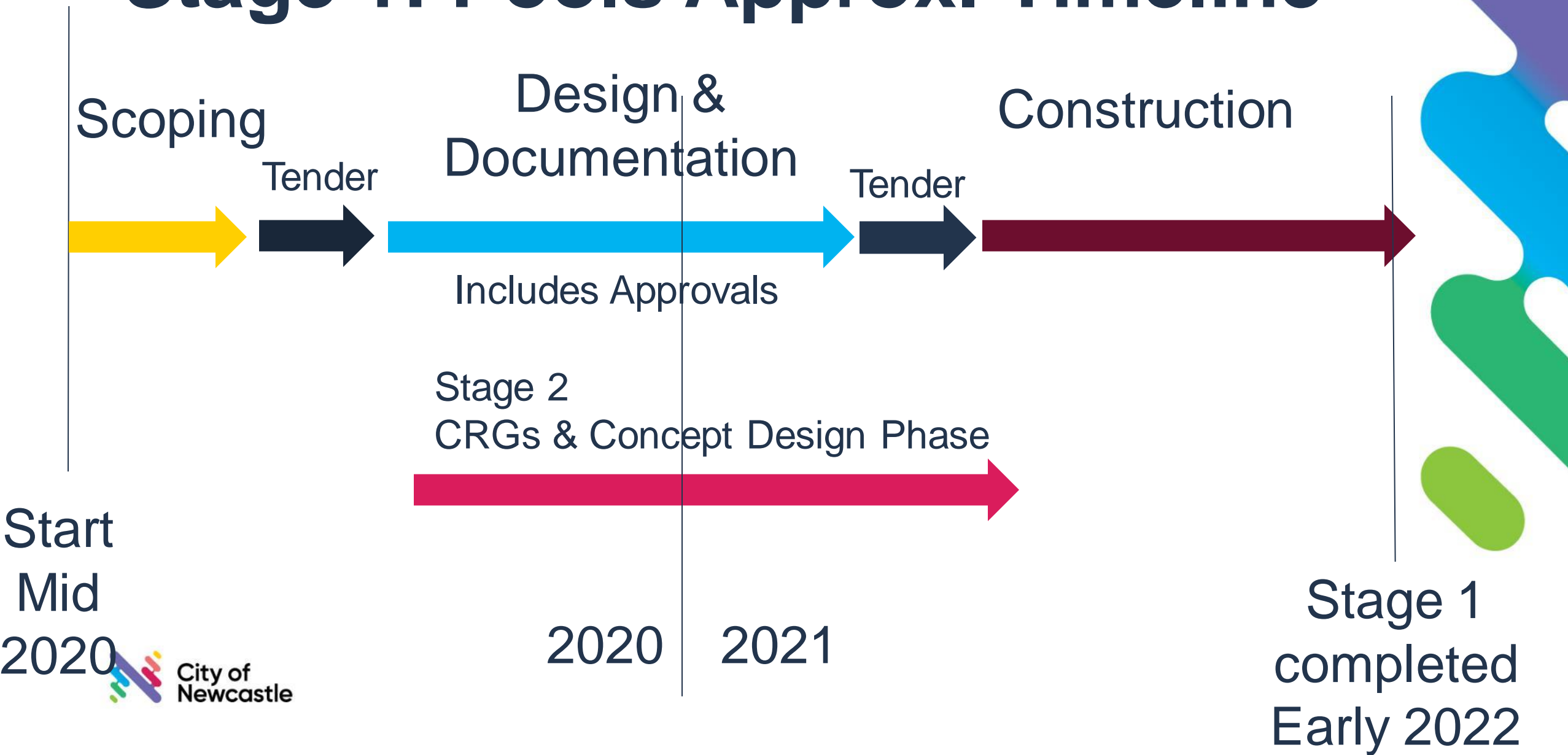
Pools side of works

Stage 2

Pavilions side of works



Stage 1: Pools Approx. Timeline



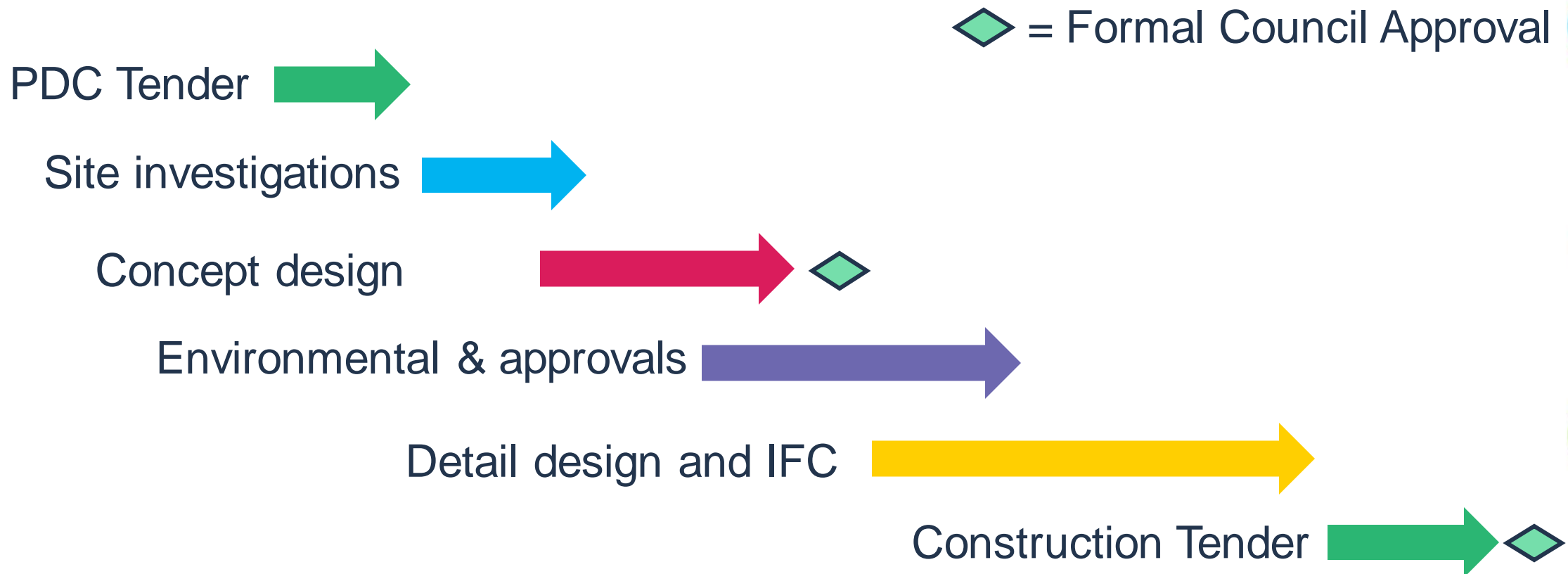
Stage 1: Design Tender

CN will engage a Principle Design Consultant (PDC) to complete the Stage 1 design, including:

- Site investigations
- Concept design
- Environmental investigations and approvals
- Detail design
- For Tender and Construction documentation



Stage 1: Design Tender



Stage 1: Project scope

Pump relocation

Extent of works with
review of levels, access,
seating in Stage 2

Access

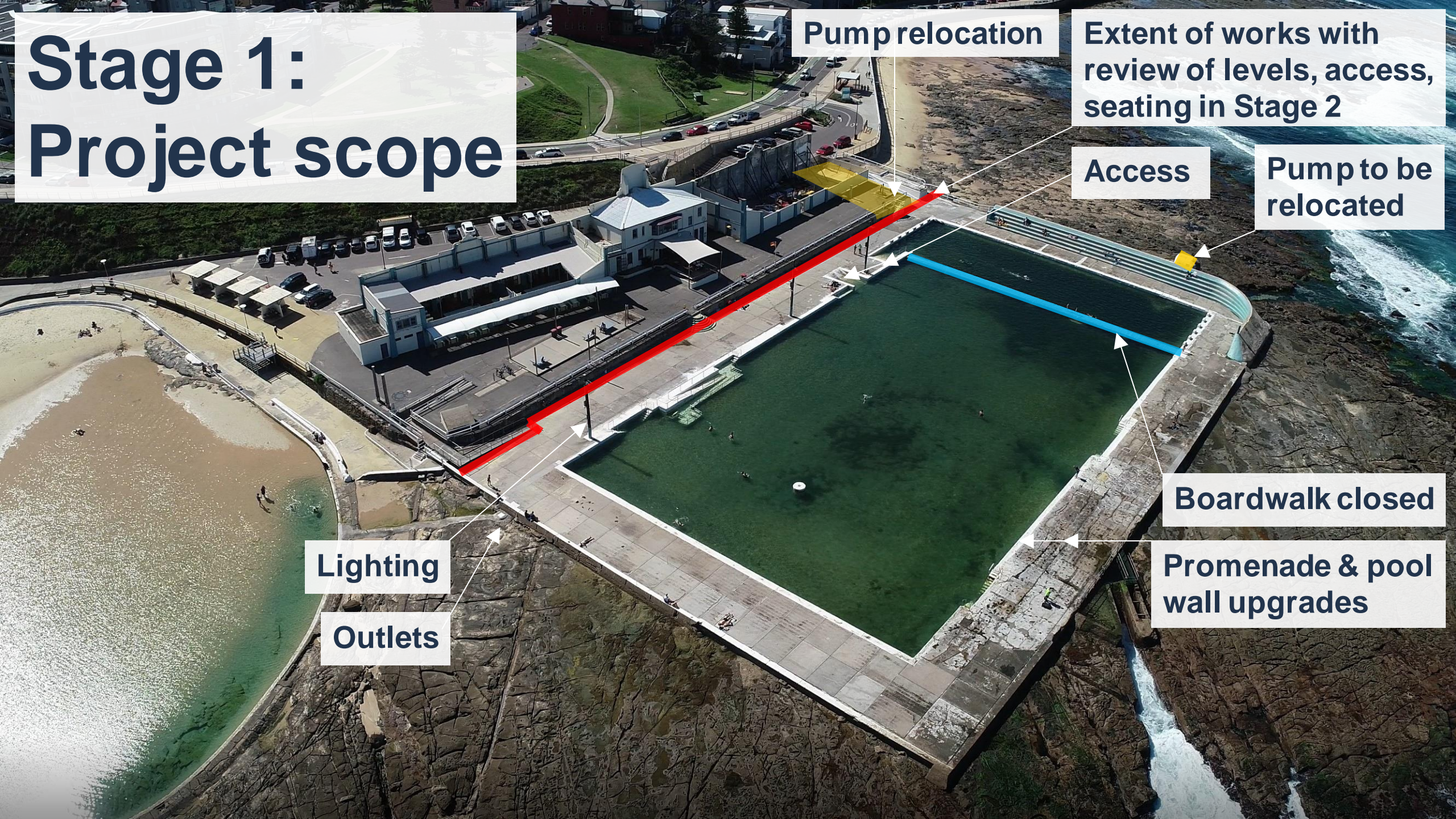
Pump to be
relocated

Lighting

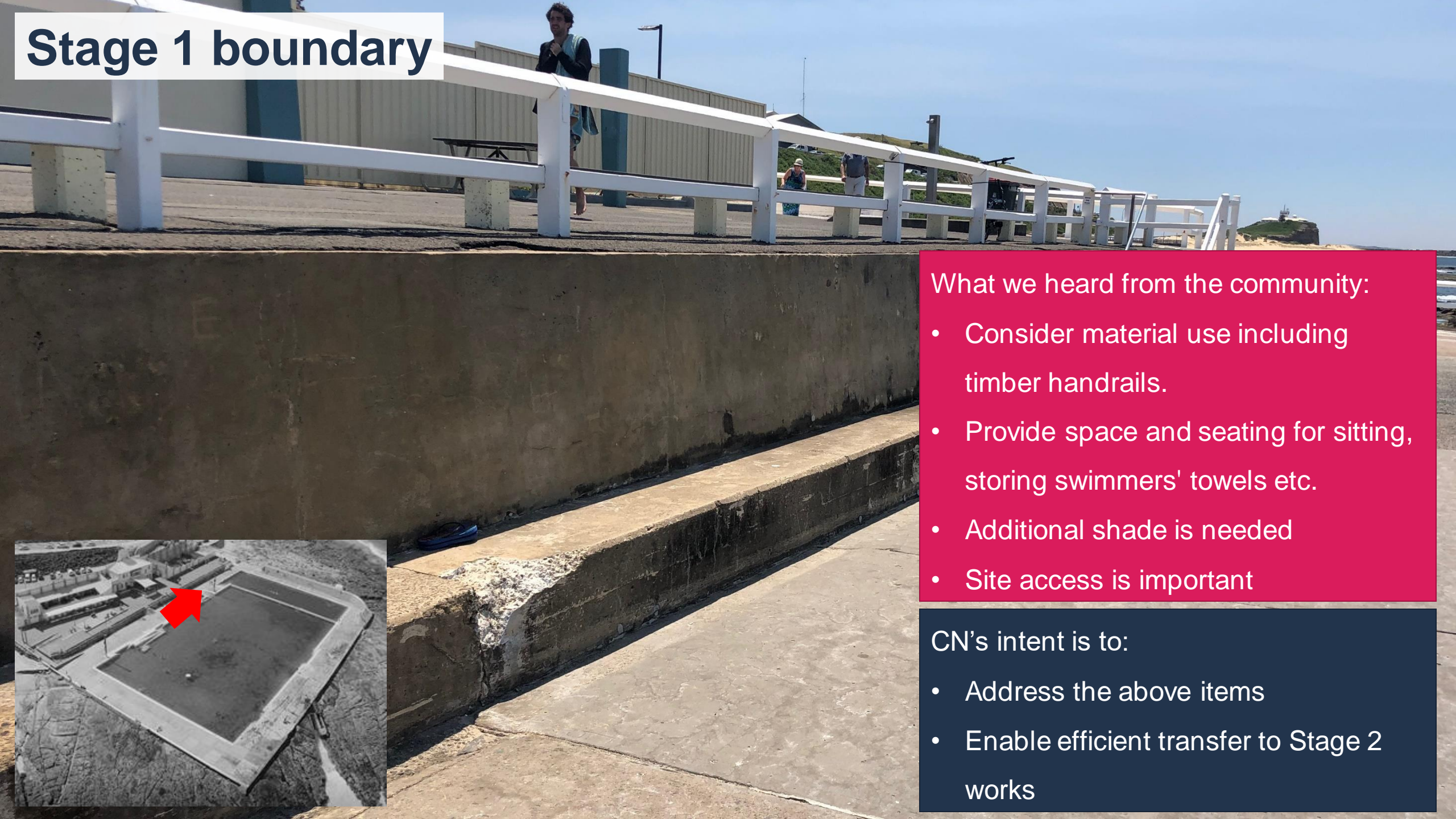
Outlets

Boardwalk closed

Promenade & pool
wall upgrades



Stage 1 boundary



What we heard from the community:

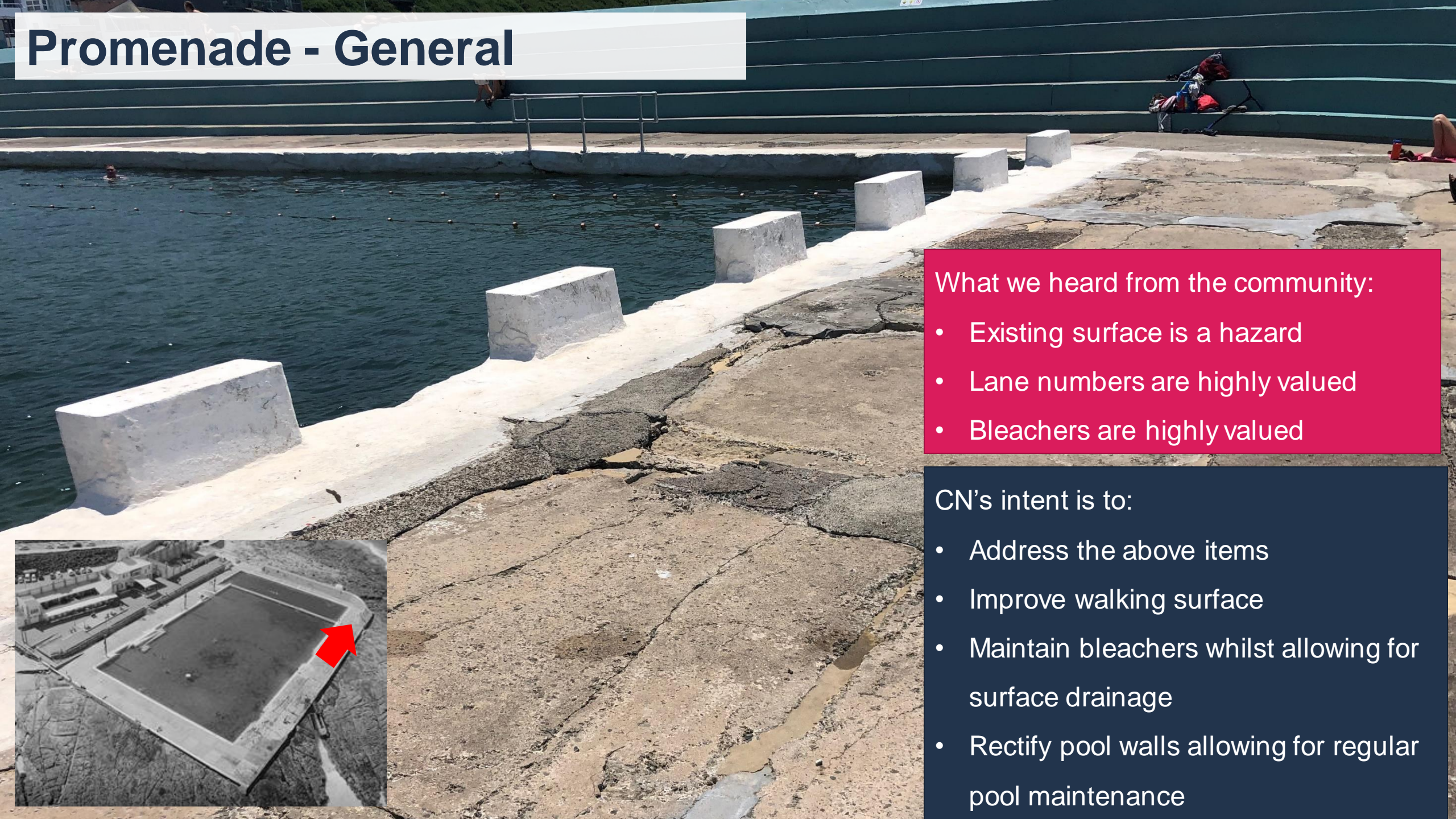
- Consider material use including timber handrails.
- Provide space and seating for sitting, storing swimmers' towels etc.
- Additional shade is needed
- Site access is important

CN's intent is to:

- Address the above items
- Enable efficient transfer to Stage 2 works



Promenade - General



What we heard from the community:

- Existing surface is a hazard
- Lane numbers are highly valued
- Bleachers are highly valued

CN's intent is to:

- Address the above items
- Improve walking surface
- Maintain bleachers whilst allowing for surface drainage
- Rectify pool walls allowing for regular pool maintenance



Promenade - South



What we heard from the community:

- Existing surface is a hazard
- Space to lie in the sun is valued

CN's intent is to:

- Address the above items
- Rectify retaining wall instability and safety

Promenade - Southeast



What we heard from the community:

- Existing surface is a hazard

CN's intent is to:

- Address the above item
- Rectify retaining wall instability and safety
- Investigation of energy dissipation measures



Pools and Lighting

What we heard from the community:

- Sand bottom is highly valued
- Lighting needs to be updated but reinstated

CN's intent is to:

- Address the above items
- Update lighting to modern standards, honoring the site heritage



Pools and Access



What we heard from the community:

- Access needs to be improved
- Depth changes need to be respectful of heritage value
- Maintain historical concrete plinth (Butchers Block)

CN's intent is to:

- Address the above items
- Query raising promenade height with consideration to heritage constraints and pool depth

Boardwalk



What we heard from the community:

- Boardwalk is highly valued

CN's intent is to:

- Restore/replace to enable 50-year design life with minimal maintenance and safe use



Pump House



What we heard from the community:

- Pump house is a significant site feature

CN's intent is to:

- Decommission the pump house and relocate pumps
- Keep the pump house as a feature



Group Discussion

Stage 1 works

1. Have we captured your feedback correctly?
2. Is there any points missing we need to consider?

Anything missing ...

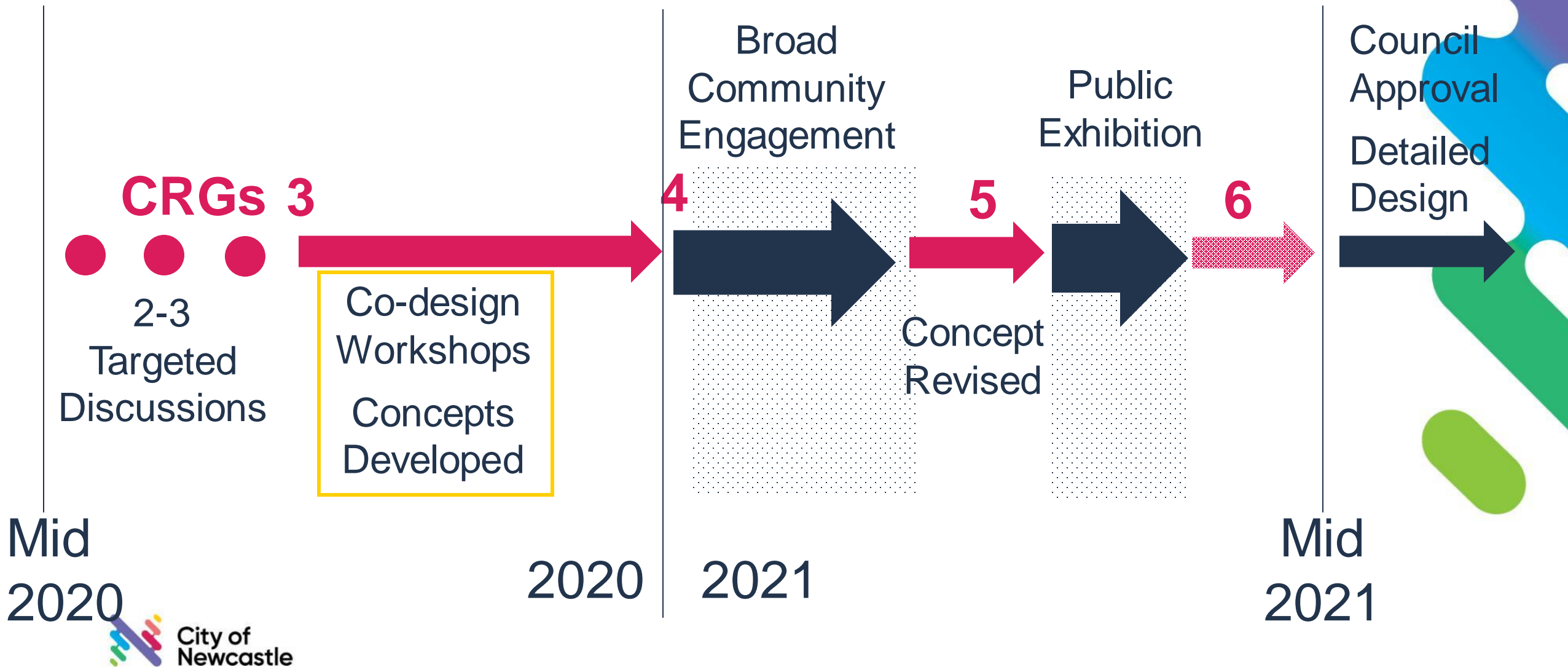
- We are looking to hold site tours in the next few weeks focusing on Stage 1 work
- EOI to attend will be circulated in the coming days

Stage 2 update and moving into co-design

Stage 2 – site investigations – Western Facade

- Onsite testing between 18 – 19 August to testing the existing electrical corrosion prevention device
- Further testing at the end of August (1 week duration).
- The Baths will remain open, with exclusion zones in place to manage safety during the inspections.
- Please follow directions on any signage at the site or directions from our team during this time.

Stage 2: Proposed CRG meetings



Co – design process





Draft Terms of Reference

Questions

Next Steps

Thank you