



City of
Newcastle

Fact Sheet

Proposal for a Material Recovery Facility at Summerhill Waste Management Centre

City of Newcastle (CN) is proposing to build a Material Recovery Facility (MRF) at Summerhill Waste Management Centre.

The proposed facility will sort mixed recyclables collected from household yellow lid bins into individual material types—paper, cardboard, glass, plastics, steel and aluminium.

The clean and separated materials can then be sold to recycling factories to be made into new products.

newcastle.nsw.gov.au/yoursay



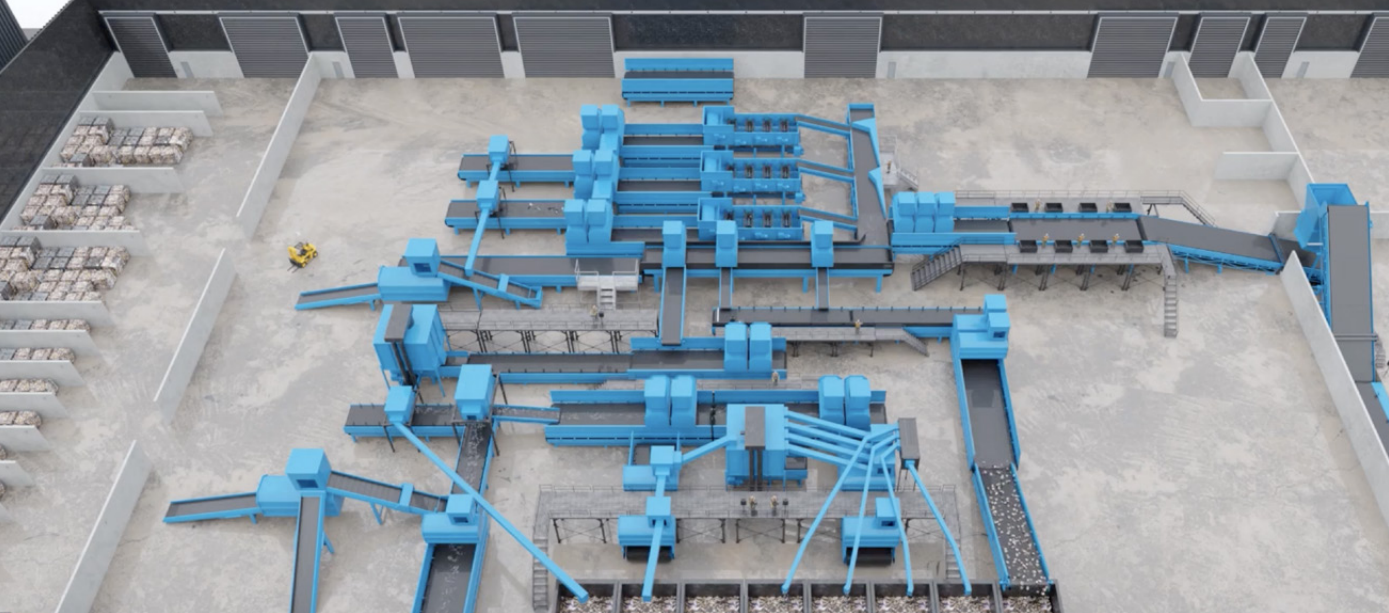
Proposed Material Recovery Facility at Summerhill Waste Management Centre

The proposal

About 15,000 tonnes of household recyclables are collected from CN yellow lid bins each year. The mixed recyclables are taken to Summerhill Waste Management Centre and are then transported in larger trucks to a MRF located on the Central Coast for sorting.

Building a MRF at the Summerhill Waste Management Centre will:

- allow recyclables to be sorted in Newcastle.
- reduce transport costs and save greenhouse gas emissions.
- create up to 28 new jobs.
- be owned by CN and provide continuity of your kerbside recycling service into the future.
- together with our new Organics Processing Facility, create a resource recovery hub that will encourage new businesses to establish, leading to more jobs.



Project Timeline

Planning and investigations

Preparation of design and environmental impact assessments (Jan-Jul 2022)

Community consultation
(11 May-30 Jun 2022)

WE ARE
HERE

Lodgement of Development Application (DA)
and Environmental Impact Statement (EIS)
(Aug 2022)

Public exhibition of EIS (Sep 2022)

Assessment of DA (Sep 2022-Apr 2023)

Determination of DA by Hunter and
Central Coast Planning Panel (May 2023)

Design finalised incorporating
consent conditions (May 2023)

Construction of MRF (May 2023-Oct 2024)

MRF opens (Oct 2024)



Separated recyclables (paper, cardboard, plastics, glass, aluminium and steel) are stored in bays until they can be transported to various recyclers to be made into new products.

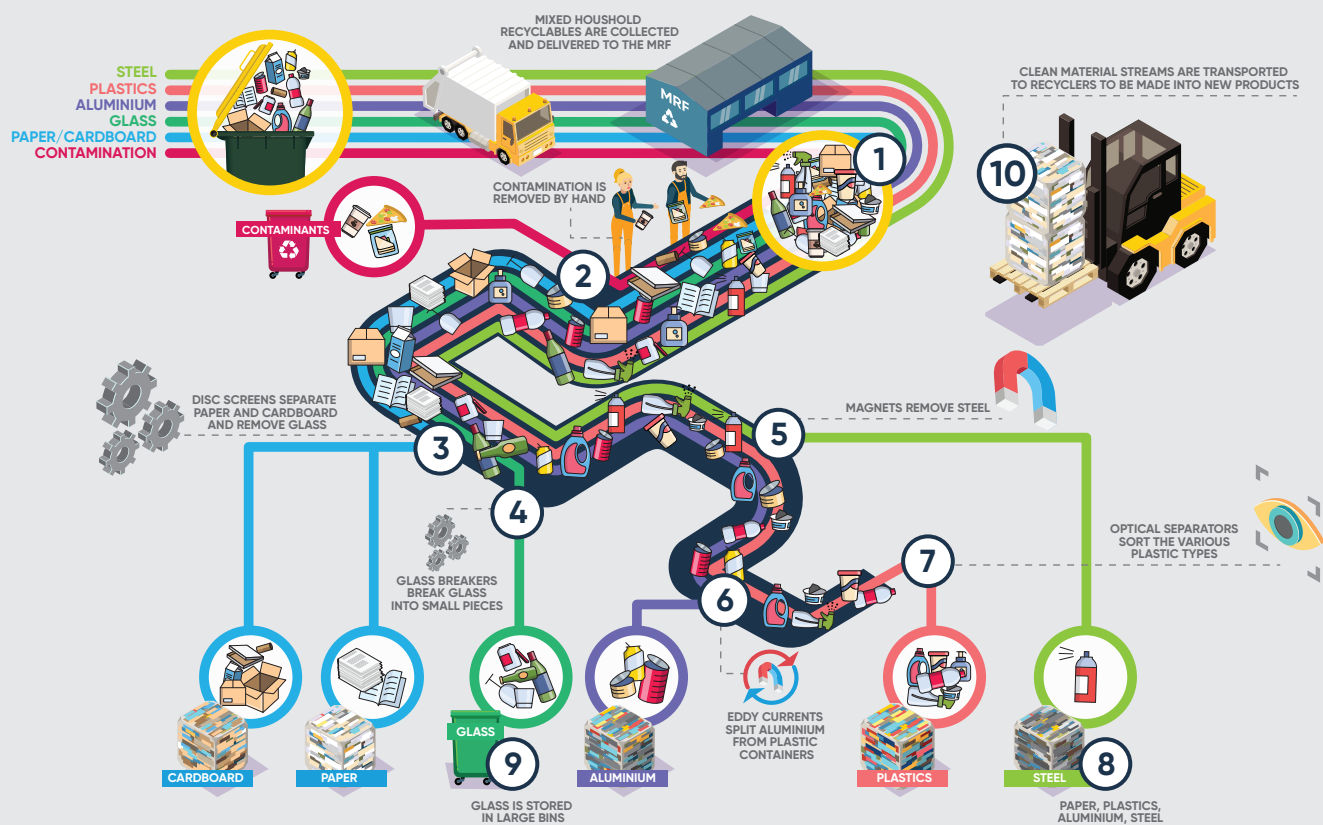
Layout of a Material Recovery Facility: A network of conveyors move the mixed recyclables through a series of equipment that sort the mixed recyclables into individual material streams.

Key features

- Avoids the long and costly transport of our recyclables to the Central Coast for sorting.
- Capable of sorting up to 85,000 tonne of recyclables per year.
- Can receive recyclables from CN household recycling bins, other Councils and some from the commercial sector such as shops and restaurants.
- Fully enclosed state-of-the-art sorting and processing technology.
- The highly automated process ensures clean, high quality materials with strong demand from markets.
- Non-recyclable material (contamination) is removed by hand and landfilled.
- Paper, cardboard, aluminium, steel and plastics are baled and glass is placed in bins for efficient storage.
- Clean and sorted materials can be sold to recycling factories and made into new products.



Material Recovery Facility processing



Have
your
say

How to have your say

You can find out more and provide feedback on the proposal by visiting newcastle.nsw.gov.au/yoursay or scanning this QR code.

You can also phone our consultant, GHD, toll-free on **1800 066 243**.



City of
Newcastle