

**City of  
Newcastle**

# **Wallsend proposed parking changes**

## **Engagement report – June 2020**

**July 2020**

**Prepared by:** Major Events and Corporate Affairs, City of Newcastle

**Enquiries:** [engage@ncc.nsw.gov.au](mailto:engage@ncc.nsw.gov.au) or (02) 4974 2000

## Table of contents

<b>Executive Summary</b> .....	3
<b>1. Background</b> .....	4
<b>2. Communication</b> .....	4
<b>3. Engagement activities</b> .....	6
<b>4. Engagement results – online feedback</b> .....	7
Bunn Street .....	8
Nelson Street .....	11
William and Charles streets.....	13
Tyrrell Street .....	15
Kemp Street.....	17
Metcalf and Murnin streets .....	19
CN off-street carparks .....	21
<b>Appendix I – Promotional materials</b> .....	23
Have your say webpage.....	23
Social media .....	24
Flyer and onsite signage .....	25
Media coverage.....	29
<b>Appendix II – Online feedback form (survey)</b> .....	30
<b>Appendix III – Other submissions</b> .....	39

## Executive Summary

Following feedback from local businesses, changes are proposed to some existing parking restrictions in Wallsend with the aim to best position the area for medium to long-term development under the City of Newcastle (CN) Local Centres Plan. The proposed changes involve introducing, or reducing the duration of, time restricted parking at various locations across the town centre, with the aim to improve access to local businesses and support upcoming work to revitalise the town centre.

To better understand community opinion on the proposed changes, CN carried out localised engagement with the Wallsend community from 15 June to 5pm 12 July 2020. As part of this consultation, CN also sought community opinion on the introduction of time restricted parking in various off-street CN operated car parks in the area.

The proposed parking changes were broadly communicated and community members were able to provide feedback via an online form, by mail or email and by phone. In total, 50 people provided comment on the proposed changes via the online form, and 12 provided a submission by mail, email or phone.

On balance, feedback from the online form indicates the changes are generally supported. Proposed changes with the highest levels of support were Kemp (60% support), Metcalfe (49%) and William (47%) streets. Support was lowest for proposed changes on Bunn Street (41%), and this seems to be driven in part from concerns from nearby workers.

Street	Current Restriction	Proposed Restrictions	Support for proposal		
			Yes	No	Don't know
<b>Bunn Street</b>	6 x Unrestricted	6 x 1-hour (1P) (9am – 5pm Monday to Friday, 9am – 1pm Sat)	41% <i>n= 37 respondents</i>	41%	19%
<b>Nelson Street</b>	5 x Timed (1P)	5 x 30-minute (1/2P) (9am – 5pm Monday to Friday, 9am – 1pm Sat)	45% <i>n= 38 respondents</i>	42%	13%
<b>William Street</b>	15 x Unrestricted	15 x 4-hour (4P) (9am – 5pm Monday to Friday)	47% <i>n= 38 respondents</i>	24%	29%
<b>Charles Street</b>	12 x Unrestricted	12 x 4P (9am – 5pm Monday to Friday)	42% <i>n= 38 respondents</i>	26%	32%
<b>Kemp Street</b>	21 x Unrestricted	21 x 4P (9am – 5pm Monday to Friday)	60% <i>n= 40 respondents</i>	25%	15%
<b>Metcalfe Street</b>	4 x Unrestricted	4 x 2P (9am – 5pm Monday to Friday, 9am – 1pm Sat)	49% <i>n= 39 respondents</i>	28%	23%
<b>Murnin Street</b>	4 x Unrestricted	4 x 2P (9am – 5pm Monday to Friday, 9am – 1pm Sat)	44% <i>n= 39 respondents</i>	28%	28%
<b>Tyrrell Street</b>	4 x Timed (1P)	4 x 1/2P (9am – 5pm Monday to Friday, 9am – 1pm Sat)	43% <i>n= 40 respondents</i>	35%	23%

In regard to CN operated off-street carparks, views were mixed. About half of those completing the online feedback form indicated they did not want to see any changes to current restrictions. Of those who indicated they would like to see changes to restrictions, changing to 4-hour timed (4P) parking received the most support.

CN will use the community feedback to help refine the proposed parking changes, before presenting the proposals and community feedback to the Newcastle City Traffic Committee for review.

## 1. Background

Wallsend is a growing local centre undergoing renewal project as part of the Wallsend Local Centres plan. Parallel to this, City of Newcastle (CN) has received multiple representations from Wallsend businesses requesting investigation into possible changes to the existing parking restrictions, with a view to improving access to local businesses for residents and visitors.

As a result of a targeted inquiry into parking in the area, numerous changes are being proposed with the aim to best position the Wallsend town centre for the medium to long-term development of the area under the Local Centres Plan. The proposed changes involve reducing the duration of time restricted parking at several locations across Wallsend:







Street	Current Restriction	Proposed Restrictions
<b>Bunn Street</b>	6 x Unrestricted	6 x 1P (9am – 5pm Monday to Friday, 9am – 1pm Sat)
<b>Charles Street</b>	12 x Unrestricted	12 x 4P (9am – 5pm Monday to Friday)
<b>Kemp Street</b>	21 x Unrestricted	21 x 4P (9am – 5pm Monday to Friday)
<b>Metcalf Street</b>	4 x Unrestricted	4 x 2P (9am – 5pm Monday to Friday, 9am – 1pm Sat)
<b>Murnin Street</b>	4 x Unrestricted	4 x 2P (9am – 5pm Monday to Friday, 9am – 1pm Sat)
<b>Nelson Street</b>	5 x Timed (1P)	5 x 1/2P (9am – 5pm Monday to Friday, 9am – 1pm Sat)
<b>Tyrrell Street</b>	4 x Timed (1P)	4 x 1/2P (9am – 5pm Monday to Friday, 9am – 1pm Sat)
<b>William Street</b>	15 x Unrestricted	15 x 4P (9am – 5pm Monday to Friday)

To better understand community opinion on the proposed changes to parking restrictions, CN carried out localised engagement with the Wallsend community from 15 June to 12 July 2020. As part of this consultation, CN also sought community opinion on the introduction of time-restricted parking in various off-street CN operated car parks in the area.

## 2. Communication

During the engagement period, a communications campaign was implemented to raise awareness of the proposed parking changes and promote the opportunity for community members to provide feedback. The aim of the campaign was to encourage active participation by Wallsend businesses and residents.

Key communications activities are summarised on the following page, and key pieces of communications collateral are available in Appendix I.

Channel	Description	Reach
 <b>Have Your Say webpage</b>	A dedicated project webpage was created on CN's Have Your Say landing page. A link to this page was also added to CN's Public Exhibitions page. The page aimed to provide information and raise awareness about the proposed parking changes, and to encourage people to comment on the proposed changes.	338 page visits (to 1 July 2020)
 <b>Flyers and onsite signage</b>	<p>Flyers were distributed to residents and businesses near the proposed parking changes.</p> <p>Onsite signage (A0 corflutes) was also installed at key locations near areas where parking changes are proposed.</p>	<p>1,000 flyers</p> <p>Seven corflutes</p>
 <b>Social media</b>	<p>The consultation was promoted via an unpaid post of CN's Facebook page on 25 June 2020. The post intended to raise awareness of the proposed parking changes and encourage people to have their say.</p> <p>The local MP for Wallsend (Sonia Hornery) also posted about the proposed changes on 16 June 2020, tagging a number of local businesses. This post was shared 24 times, suggesting good reach</p>	4,551 reach
 <b>Newsletter</b>	An e-newsletter was distributed to the Newcastle Voice database of residents and stakeholders. This is an active database of community members who have registered to take part in CN engagement activities.	2,400
 <b>Doorknocks</b>	CN representatives from the Transport & Compliance and Community Engagement teams attended Wallsend on Friday 19 June 2020 to carry out a doorknock with local businesses adjacent to proposed parking changes on Nelson, Tyrrell and Kemp streets. The purpose was to raise awareness of the proposed parking changes and encourage feedback through CN's Have Your Say webpage.	10
 <b>Councillor Memo</b>	A memo was distributed to CN Councillors on 15 June 2020, advising of the proposed parking changes and providing information on how constituents can provide feedback and comment.	13
 <b>Media coverage</b>	Though a media release was not issued, the project was picked up in press (Newcastle Herald) and radio (NEWFM) on 16 June 2020. The coverage was neutral in sentiment, and invited the community to have their say on the proposed changes via CN's website.	n/a

### 3. Engagement activities

The community were invited to provide feedback on the proposed parking changes from Monday 15 June 2020 to 5pm Sunday 12 July 2020.

The community were able to provide comment on the proposed parking changes in a number of ways:

#### Online feedback form

This was structured as a survey, housed on a dedicated Have Your Say webpage on CN's website, where respondents could choose which of the proposed parking changes they wanted to provide feedback on.

For each proposed change, respondents were presented with a map of the existing and proposed parking arrangements and asked to indicate their level of support for the proposed change, whether additional changes should be considered, and given the option of leaving further comments about parking in the area in an open-ended question. A copy of the survey is included in Appendix II.

In total, 50 people completed the survey. The number of people providing feedback on specific areas where parking changes are proposed was as follows:

Street	Feedback received (n= )
Bunn Street	37
Nelson Street	38
William and Charles streets	38
Tyrrell Street	40
Kemp Street	40
Metcalf and Murnin streets	39
Off-street car parks	50

Findings from the survey are presented in section 4. Engagement outcomes

#### Other submissions

Community members were also able to provide feedback on the proposed parking changes by mail, email or phone. In total, 12 submissions were received via these channels.

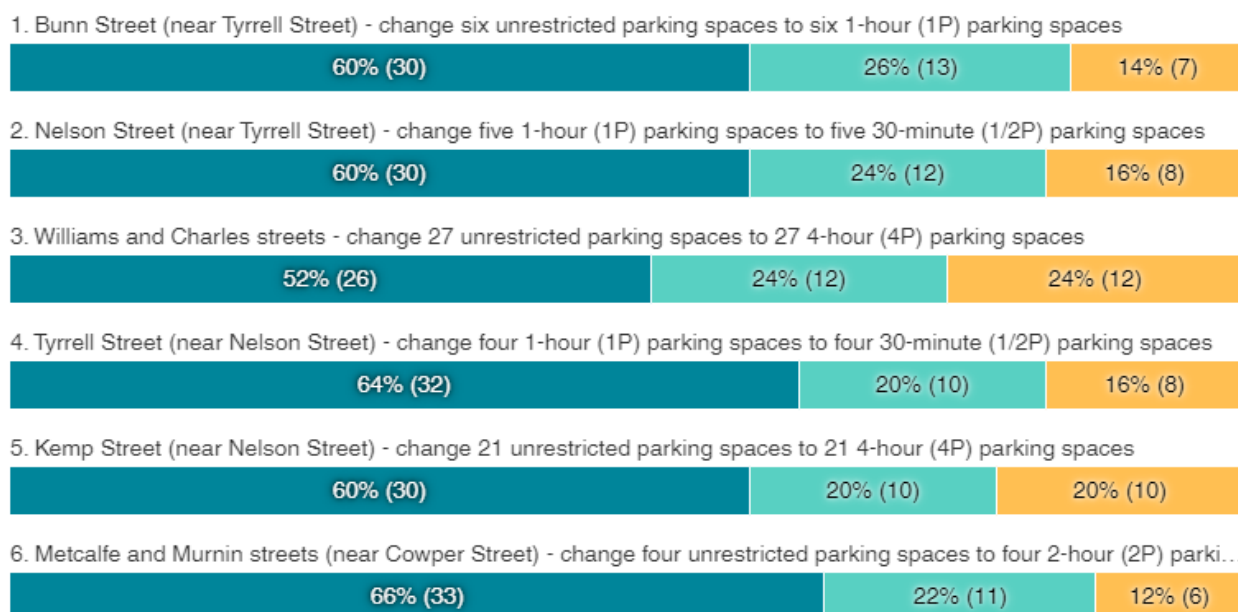
The sentiment of the submissions largely opposed the proposed changes, driven by workers in the area and nearby residents. Some businesses in the area supported the proposed changes and made suggestions for loading zones in some areas. De-identified copies of submissions received are included in Appendix III.

## 4. Engagement results – online feedback

At the beginning of the online form (survey), respondents were presented with an overview of the proposed parking changes and were asked to indicate which they would like to comment on. This question served as a filter, where respondents who were not interested in a given location were not asked questions for that location. Overall, about 40 respondents provided feedback on each location.

Total participants: 50

● Interested ● Not interested ● Don't know



For the remainder of the survey, eligible respondents were presented with information about existing and proposed parking arrangements, for each location separately, and asked to indicate whether they supported the proposed changes. Respondents also had the opportunity to leave a comment in an open-ended question for each location.

## Bunn Street

- Moderate support for the proposal
- Limited desire to see more 1P in the area
- Most concerns coming from workers in the area about safety, and some concerns from nearby residents

### 🗳 Bunn support

Do you agree with the proposed parking changes at Bunn Street, as outlined above?

Total participants: 37

Yes



No



Don't know



### 🗳 Bunn more 1P

Would you like to see more 1-hour (1P) parking on Bunn Street?

Total participants: 37

Yes



No



Don't know





Bunn Street open-ended comments	Sentiment
The section directly opposite the proposed site should also be limited to 1 hour as well.	Positive
This will stop bludgers taking up a spot all day long.	Positive
As Bunn Street is close to public transport and shopping centre, it is used by commuters & shopping centre staff who could be encouraged to park a little further away from the bus stops for the whole day and leave this parking open for short term visitors to the library and shops	Positive
any person wanting to visit more than 1 business cannot do it in 1 hour	Negative
Leave the unrestricted parking as it presently is. Staff working in businesses in this area park their cars in this area. They can't leave their work every hour or every few hours to move their car.	Negative
Staff from Wallsend village park here. There is not a lot of parking around the centre as it is now and with the centre putting parking restriction a on the actual carpark where do they think staff can park if the streets around the centre are timed parking, it is already dangerous with a number of reports people being followed to cars in the streets and not to mention starting before and after dark it is not safe to be walking the streets when dark, we need staff parking	Negative
<p>The proposed changes to parking on Bunn Street will negatively impact the current lifestyles of the six adults (all from one family) that currently reside at ■ Bunn Street. There is one car space at this property, therefore street parking is necessary. To impose the proposed timed parking will cause disruption and stress to our usual routines. Currently, we park on Bunn/Tyrrell street and managed to find a park most times close to home. Under the proposed timed parking in Bunn and Tyrrell streets, our options to park near our home in untimed spaces will be greatly diminished, causing us time and stress duress, as we try to locate a park elsewhere. A number of us are shift workers and come and go across the 24hr period. Walking to a car a number of streets away at night (having parked there that morning) is not a safe practice. Constantly having to think about moving your car for safe access will have negative impacts on our psychological wellbeing.</p> <p>Given that there is now new timed parking at Wallsend Village and timed parking throughout Wallsend CBD, consideration needs to be given to the residents that live on the CBD's perimeter. In this way, the proposed parking changes to Bunn/Tyrrell streets should not be implemented.</p>	Negative
Since Stockland Centre has had 3 hour parking introduced there are no or very little parking for the educators of the Child Care Centre to park and if this is limited to hour parking they will be then parking in side streets further away from the centre and having to walk to their car in the dark on their own. Safety is a very big issue.	Negative
<p>Please find alternatives for all day parking.</p> <p>Where will childcare workers and library workers park?</p>	Negative
customers have 3 hour parking in the shopping centre, leave street parking for workers	Negative
There is plenty of 3 hour free customer parking at the centre. Where are staff that work at the centre supposed to park? The further away you make us park the more dangerous it gets to be walking the streets at 5:30-6:00 am	Negative
What is the rationale for 1P? Is it so staff don't park there? If so will there be other staff parking made available? Otherwise it will spill over into other residential streets	Other

The road narrows significantly in the area proposed for restricted parking - making it hazardous to exit the Wallsend shopping (Bunn St.) car park. This is because of the road undulations, and the traffic flow toward the library. Removing parking from the Eastern side would be better, but in lieu of that, restricted parking will suffice.	Other
the area near the preschool needs to be reduced to maybe 15 - 30min and the section in front of that to 1 hour, with residents given exemption permits	Other
I would like to see more hours allowed for Parking esp.: for the workers at Wallsend Shopping Village	Other
I would like to know why you would change it from unrestricted to 1 hour?	Other
It seems to me that the problems for present and existing parking spaces arise from the changes that have been to the Wallsend Village carpark, which have caused problems for several months. Adjacent streets (such as the section of Tyrrell Street which is between Bunn and Devon Streets) are now treated as car-parking facilities for shoppers and those employed in the area. This is hardly satisfactory. I wish Council would reclaim that frightful orange shed (formerly a loan shark) next to the Tyrrell Street bridge and demolish it for conversion to a limited-space car park. It could be made into an attractive area, whereas now it an eyesore.	Other

## Nelson Street

- Moderate support for the proposal
- Limited desire to see more ½P in the area
- Call to remove or reduce the taxi rank on Nelson Street

### 🗳 Nelson support

Do you agree with the proposed parking changes at Nelson Street, as outlined above?

Total participants: 38

Yes



No



Don't know



### 🗳 Nelson more 1/2P

Would you like to see more 30-minute (1/2P) parking on Nelson Street?

Total participants: 38

Yes



No



Don't know



Nelson Street open-ended comments	Sentiment
It would be a good idea to have more along nelson street because people might just want to drop in to chemist, other businesses etc	Positive
More timed parking hopefully more turn over more customers	Positive
Leave them at 1 hour so people can go to hair dresser , cafe etc without feeling the rush and fear of a ticket!!	Negative
Definitely NO more reduced parking. Please consider the nature of businesses in the main street, where services take longer than 30 minutes. Dentist, hair salons/barbers, cafes, etc. To be able to attend a couple of shops on the one visit, may require to park and walk to the various businesses in the main street.	Negative
We operate an optical business just up from these parking spaces. Eye tests take half an hour. Reducing the 1 hour parking spaces would impact the ability of our customers, many elderly, to find a park within close walking distance of our shop.	Negative
30min parking is not enough time. If you are going to see a doctor for an example, and they are running late, by the time you wait then see doctor that is more than half an hour. It is the same for when you have a hair appointment or any type of appointment really	Negative
How are you supposed to get all your shopping done in 30 mins? This will stop customers coming to Wallsend	Negative
Just taking away more parking for businesses around the area	Negative
Stops people hanging around	Negative
why have a taxi rank in nelson st ,when the RSL is the major taxi pickup point.. Taxi rank is seldom in use.....NO to 30 minute parking.. Businesses have hard enough time attracting clients and 30 minutes is not enough time to visit more than 1 shop quickly	Other
move the taxi rank in to Tyrrell street	Other
The taxi zone in Nelson Street, needs to be moved into Tyrrell Street, opposite the Lemon Grove. That will free up space on Nelson Street. With the Taxi zone moved those spaces could be turned into 30 min parking as well.	Other
Re-claim properties near the Tyrrell Street bridge and turn them into landscaped, limited space car parks for those wishing to shop in Nelson Street Wallsend.	Other
Removal or reducing the taxi rank would free up more parking in this area. 30 minute parking is only of benefit to takeaway food outlets and not the other businesses.	Other
Remove the taxi rank which is not required and is barely used . There are also taxi ranks at the Diggers club and the nearby plaza. Replace this area with 30 min (4 spaces). These half hour spaces would also assist with parking nearby takeaways while hopefully leaving 1 hr spaces for shoppers and street browsers. There needs to be additional parks created, as the Wallsend centre plan indicates a potential further loss of up to 16 spaces throughout the area.	Other
Remove the taxi rank - it is not required. Provide more disabled parking	Other

## William and Charles streets

- Proposals generally supported
- Most concerns coming from workers in the area

### William support

Do you agree with the proposed parking changes at William Street, as outlined above?

Total participants: 38

Yes



No



Don't know



### Charles support

Do you agree with the proposed parking changes at Charles Street, as outlined above?

Total participants: 38

Yes



No



Don't know



<b>William and Charles streets open-ended comments</b>	<b>Sentiment</b>
used by workers at present either commuting on to town or working all day locally. Good move to move them on and increase visiting shops with extended time	Positive
4 hour parking supported. This seems sufficient	Positive
Plenty of nearby car parks should reduce any impact	Positive
Especially the proposed William Street parking restrictions will be greatly appreciated by families visiting the office of Pettigrew Family Funerals. Thank you for this proposal.	Positive
Leave them as they are. People need these unrestricted for work etc	Negative
I would like to see more hours allowed for Parking esp.: for the workers at Wallsend Shopping Village	Negative
People working in businesses in this area park their cars here. They can't leave work every hour or every few hours to move their vehicle to avoid a parking fine. Leave it as is.	Negative
Staff need to park somewhere	Negative
Why are you trying to make it harder for people to come to Wallsend and support small businesses? The NCC should look at helping to support local businesses grow not go out of their way to make it harder for people to park and visit smaller business centres	Negative
I live in Clarke Street with no off street parking. As it exists, residential parking in the street is being used all day Monday to Friday by commuting workers coming to the area. If you restrict parking in surrounding streets, I believe it will make the current situation in Clarke Street even worse as congestion will increase. If you are proposing restricting parking in surrounding streets, I can only suggest doing the same in Clarke street OR providing more all day parking to accommodate commuters. I have already sent a letter to Council regarding this issue in December last year.	Negative
As a business owner I need my clients to have sometimes lengthy appointments so if all the parking is changed to only 1 hour that will make it very difficult for my clients to have their appointments done . Please we still need lengthy parking lots	Other
reduce the time to 1 - 2 hours not 4 hours.	Other

## Tyrrell Street

- Moderate support for the proposal
- Limited desire to see more ½P in the area
- Concerns that ½P doesn't allow customers enough time to conduct their business in the area

### 📍 Tyrrell support

Do you agree with the proposed parking changes at Tyrrell Street, as outlined above?

Total participants: 40

Yes



No



Don't know



### 📍 Tyrrell more 1/2P

Would you like to see more 30-minute (1/2P) parking on Tyrrell Street?

Total participants: 40

Yes



No



Don't know



<b>Tyrrell Street open-ended comments</b>	<b>Sentiment</b>
Turn over has to have benefits	Positive
More 30 minute parking in Nelson Street, between Tyrrell and Cowper Streets.	Positive
Why change to 30 mins? Most people spend longer than this at the cafes, shop, hairdresser, health appointments.	Negative
I think this should stay as 1 hour p	Negative
as stated businesses need more than 30 minutes to entice customers	Negative
Again, half an hr goes too quickly, especially if you have an appointment or need to see a doctor or go to the chemist. By the time you go in, wait for a prescription, etc half an hr is not enough	Negative
I would like to see more hours allowed for Parking esp.: for the workers at Wallsend Shopping Village	Negative
In addition, the building of McDonalds and the removal of approximately 6-8 parking spaces as a direct result of the Tyrrell street bridge rebuild, has added to the parking problems for the residents that live in Bunn/Tyrrell streets. Having such a large number of car spaces already removed and now with the proposed timed parking will further add to our stress in locating a park close to our homes. I appreciate that businesses want to accommodate clients, but surely our needs as residents must receive serious consideration resulting in the proposed changes to these streets be stopped.	Negative
30 minute parking is not needed in this area.	Negative
That location does not allow the customer to complete limited business. Remove Saturday restrictions	Other
disability should be on the Diggers side and the taxi rank should be in Tyrrell Street	Other
I think the disability parking should be moved to the same side as the lemon grove and Wallsend diggers near the loading zone.	Other
I would like to see them policed, too.	Other



## Kemp Street

- Proposal generally supported
- Area appears to be used for commuters to park and ride

### 📍 Kemp support

Do you agree with the proposed parking changes at Kemp Street, as outlined above?

Total participants: 40

Yes



No



Don't know



Kemp Street open-ended comments	Sentiment
hopefully will move on all day parkers to generate shop parking	Positive
<p>This car park should be 1 -2 hours at most. It needs to have either paid parking implemented and monitored by Council rangers. You can never get a space in that carpark. I feel for the businesses operating in that street. To go to the vet takes 2 people one drives and the other gets out with the pet. The staff from the Christmas shop carry customers items across the road for them and/or they wait out the front for the customers to drive back and they put their items in the car as there is nowhere to park. The customers visiting the butcher park in the electric car space or the disability spaces.</p> <p>An all day parking solution needs to be addressed for the businesses on Cowper street side of the street, also all day parking solution for the Baptist Church needs to found other than the Kemp street carpark, there is room on the bottom side of the church and across the road towards the memorial hall. The other big issue with this car park are the people who park and then catch the bus to either the Uni or the hospital.</p>	Positive
<p>I strongly agree with the timed change, I would go one step further and make it 2 hours only and put paid meters on it. Having a business in Kemp Street, for the past 3-4 years parking for our customers is none existent and is getting worse.</p> <p>We are willing to discuss our personal experience (Newcastle Christmas Shop) with the issues in this Carpark.</p>	Positive
Bludgers park there all day. Going into town by bus. This will get more cars into Wallsend.	Positive
Will stop those who park here all day when at work, which will encourage those shopping back to Wallsend CBD	Positive

As long as the parking lot here is remaining unrestricted, I can agree with this. I live nearby on Cowper St, and there is no parking at my residence, so my vehicle is usually parked in the area marked for change. Moving it into the off-street parks in this parking lot is a reasonable change.	Positive
Local businesses rely on these car spaces for staff. If you are going to restrict these then something needs to be done elsewhere for local staff to park. We would have to walk blocks into the dark after work to get back to our cars. It's dangerous and unnecessary. It works how it is now. Look for new areas to open up parking rather than just restricting the spaces we are using already	Negative
As a worker in Wallsend, it is hard enough to get an unrestricted park to enable all day parking without taking away a further 21 parking spaces.	Negative
I would like to see more hours allowed for Parking esp.: for the workers at Wallsend Shopping Village	Negative
Workers in surrounding businesses use this area for parking. It does not give workers anywhere to leave their cars all day without incurring fines. Leave it as is.	Negative
Wallsend is a small commercial area, surely it is best for all if we offer some unrestricted parking for people who catch public transport. The city is trying to encourage people to catch public transport into town but not offering somewhere safe for them to leave their vehicles during the day.	Negative
I think this is a good idea but if this is to stop staff or commuters there needs to be a solution / somewhere else for them to park so that it doesn't clog up residential streets	Other
But no more.	Other
customers going to the doctors need plenty of time	Other
Would prefer 6 hour	Other
Why would you place a disabled park in the middle stretch of parking. I would have thought that it would be more accessible if at the front the area.	Other
Since the restrictions on parking at the Wallsend plaza shopping centre came into force it has been difficult to find parking in this area. A hour limit may be more beneficial in this area.	Other
I feel that 4 hours is too long . There needs to be ample time to browse the streets and I feel 2 hr would be adequate for this. The entire kemp street parking lots should be 2 hrs max . And unrestricted parking removed ( which seems to only encourage commuters to park and not interact with the local business area).	Other

## Metcalfe and Murnin streets

- Proposals generally supported
- Most concerns coming from workers in the area, and some from nearby residents

Do you agree with the proposed parking changes at Metcalfe Street, as outlined above?

Total participants: 39

Yes



No



Don't know



### 🕒 Murnin support

Do you agree with the proposed parking changes at Murnin Street, as outlined above?

Total participants: 39

Yes



No



Don't know



Metcalfe and Murnin streets	Sentiment
Will stop those who park here all day when at work, which will encourage those shopping back to Wallsend CBD	Positive
This still leaves a reasonable number of unrestricted parking for commuters with a few short term spaces for visitors to the village centre	Positive
If you restrict these parka also, staff on Cowper street will literally have no where safe left to park. We walk back to our cars after dark and you want to restrict all car spaces in walking distance?	Negative
I work in Metcalf street and these proposed changes wont work well for conducting business . It can be 2 spots outside of the pub because of there constant deliveries.	Negative
I would like to see more hours allowed for Parking esp.: for the workers at Wallsend Shopping Village	Negative
Please see same comment above about people who work needing somewhere to park their cars all day without worrying about parking fines	Negative
create parking spaces not take them away	Negative
During Ramadan it's difficult to get parking as a resident anywhere near the mosque. This will make it even more painful.	Negative
workers in Wallsend need the unrestricted parking	Negative
What happens to residents needing to park in or near front of their home? Why 2 hours not four? Why not the whole section from Cowper to Campbell? Both sides of the street?	Other
I would mirror those restrictions to the opposite side of the street as well. With so many businesses on that side now and limited parking, the area directly around there needs to be able to turn over.	Other
<p>Regarding Metcalfe Street Wallsend. I think that the whole of the eastern side of Metcalfe Street Wallsend from Cowper Street to Campbell Street should be 2 hour parking. For some considerable time now, workers have been parking in the whole area.</p> <p>I do not feel that 4 parking spaces of 2 hour duration is enough to service the area for patrons of the businesses nor the residents of that particular portion of the street. Actual marking of all car parking spaces would also be of assistance in the area.</p> <p>Businesses that I am aware of include The Colliery Inn, a car servicing facility and a Chiropractor, plus the old Masonic Hall has activities at times and a Mosque.</p> <p>I visit ■ Metcalfe Street on a regular basis to assist a frail and elderly lady, taking her shopping, for medical appointments etc. It has been very difficult at times to find an accessible parking space to transfer the lady to and from my car.</p> <p>Hoping that you will give my comments consideration.</p>	Other
<p>The changes at Metcalfe St are directly in front of commercial properties, and so are fine. However, the changes on Murnin St stretch in front of residential properties. I've parked there in the past, and had conversations with residents who said that they had limited off-street parking and would like to be able to use it.</p> <p>If it was only 2 parks on Murnin St, it would only slightly go past the BWS, and so wouldn't intrude on nearby residents who want their friends/babysitters/own vehicles to be able to park on the street in front of their house.</p>	Other

## CN off-street car parks

● No change - leave it as is   
 ● Change to 1-hour (1P)   
 ● Change to 2-hour (2P)   
 ● Change to 4-hour (4P)   
 ● Don't know

Kemp Street carpark - currently unrestricted parking



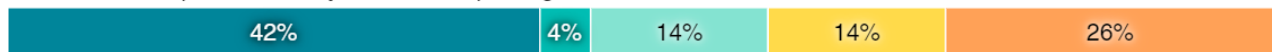
Dan Rees Street carpark - currently 2-hour (2P) parking



Council Street carpark - currently 2-hour (2P) parking



Harris Street carpark - currently unrestricted parking



### CN off-street car parks open-ended comments

Could Council look at space in Council street to make an all day carpark for the businesses which operate in Nelson street. Maybe Council could contact each business in the affected areas and find out how many staff work (paid and unpaid) in their businesses and where they currently park.

Also could Council speak with the owners of the carpark behind the bread shop, chemist and doctors and between diggers and make that a staff only carpark for the businesses on Nelson street. This may help take some pressure of the surrounding street.

Do we really need designated spaces for electric cars? Is there a big demand for this in Wallsend?

Give the workers a break. Leave the parking free and unrestricted. There's been enough problems with COVID and people losing jobs. The least you can do as a council is to give those still in work a break and not change the unrestricted parking, and change the timed parking to increase rather than decrease.

I think these car parks need to have paid meters put on them to force people to move on. These car parks are used by uni students who park and catch the bus, workers and visitors who park and catch the bus to the hospital.

Also could council look at buying the old squash/pool building which burnt down years ago and the house next to it in Council Street and make that section a carpark as well. That way Council street could provide all day parking for businesses in the Plaza and the main street. The use of Council street has the potential to increase parking significantly if the vacant blocks and damaged buildings were turned into carpark spaces.

I would like to see more hours allowed for Parking esp.: for the workers at Wallsend Shopping Village

Leave as it is or expand the parking restrictions further afield to accommodate residents who live within a 1 km radius of the CBD

Leave designated off-street car parking as-is or increase time limits. Street parking is more suited to changes, but having off-street car parks more relaxed will encourage people to use them more and spend more time visiting our historical village.

<p>Other than creating another car park in federal park which would ease parking on Boscawen also and help with sporting events as well as funerals and general parking for the area also. This could even be a 4 hr lot to accommodate for the longer sporting events Saturday morning or carnivals and training that are held at the park.</p> <p>Does the council own the swimming pool lot? I feel this is a drastically underused facility also if it is , as during the winter months when the pool is closed it isn't even open for use.</p>
<p>Reclaim properties near the Tyrrell Street bridge and Ironbark Creek to provide more city-owned carparks for Wallsend.</p>
<p>The increasing of restricted parking is going to compound the problems currently experienced with parking in Wallsend and we will increasingly see issues that are now seen in the Newcastle CBD. Furthermore restricting the amount of parking time will have an adverse affect on the businesses as the extended times allow for multipurpose visits and increase the money spent per customer</p>
<p>The only off-street parking I frequently use is the Kemp Street car park, on which I require unrestricted parking as I live on Cowper St with no off-street parking available at my residence.</p>
<p>We need more parking in general, especially with so many religious venues that do not have their own parking areas</p>
<p>Will stop those who park here all day when at work, which will encourage those shopping back to Wallsend CBD</p>

## Appendix I – Promotional materials

### Have your say webpage

02 4974 2000 Phone enquiries 8am to 5pm Monday to Friday

City of Newcastle

Select Language

**COMMUNITY ENGAGEMENT**

## Wallsend proposed parking changes

City of Newcastle is investigating possible changes to existing parking restrictions in response to feedback from local businesses.

### Wallsend is a growing local centre currently undergoing renewal.

Following feedback from local businesses, changes are proposed to some existing parking restrictions with the aim to best position Wallsend for medium to long-term development of the area under our Local Centres Plan.

The proposed parking changes aim to improve access to local businesses for residents and visitors and support upcoming work to revitalise the town centre.

The proposed parking changes involve introducing, or reducing the duration of, time restricted parking at various locations across the town centre. Changes to parking restrictions are proposed in the following locations:

- Bunn Street
- Metcalfe & Murrin Streets
- Nelson Street
- Tyrrell Street
- William & Charles Streets
- Kemp Street.

### How to have your say

Click on the map below to learn more and/or have your say on the proposed parking changes until 5pm Sunday 12 July 2020.



Indicative location of proposed parking changes.

### More information

- [Overview of proposed parking changes \(maps\)](#)
- [Wallsend Local Centre](#)

### Contact us

**Aaron Visser**  
Traffic Engineer

Phone: 4974 2000  
Email: [mail@ncc.nsw.gov.au](mailto:mail@ncc.nsw.gov.au)

### Protecting your privacy

The City of Newcastle is committed to protecting your privacy. We take reasonable steps to comply with relevant legislation and Council policy.

**Purpose of collecting personal details:** Council is collecting this information to determine the local community's views and opinions on the proposal outlined.

**Intended recipients:** Information provided as part of the consultation will be used as part of the investigation into the proposal, and may be included in future reports on the issue.

**Storage and security:** Information provided will be stored on Council's database and will be subject to Council's information and privacy policies.

**Access:** Individuals can access data to check accuracy by contacting Council.

You may also submit your feedback by email or mail to:

**Email:** [mail@ncc.nsw.gov.au](mailto:mail@ncc.nsw.gov.au)

**By mail:** Chief Executive Officer | Attention: Aaron Visser, Traffic Engineer, Transport & Compliance  
City of Newcastle PO Box 489 Newcastle NSW 2300

**Subject:** Submission - 'Wallsend proposed parking changes' in the title for emailed and posted submissions.

### Next steps

We will use community feedback to help refine the proposed parking changes, before presenting the proposals and community feedback to the Newcastle City Traffic Committee for review.



## Social media



City of Newcastle

June 25 at 3:03 PM · 🌐

Wallsend businesses have asked us to review timed parking in and around the area.

The aim is to make it easier for residents and visitors to access local businesses. The proposed parking changes would also support upcoming work to revitalise the town centre.

Learn more and have your say at <https://bit.ly/2A0KxM8>

👤 Kevin Farnham of Farnham's Butchery



Reach 4,551. Engaged users 118. Click through 96



Sonia Hornery MP

June 16 at 9:06 AM · 🌐

### HAVE YOUR SAY ON WALLSEND PARKING

City of Newcastle are calling for feedback on changes that are proposed to some existing parking restrictions with the aim to best position Wallsend for medium to long-term development of the area under the Wallsend Local Town Centre Plan.

The proposed parking changes involve introducing, or reducing the duration of, time restricted parking at various locations across the town centre. Changes to parking restrictions are proposed in Bunn Street, Metcalfe & Murnin Streets, Nelson Street, Tyrrell Street, William & Charles Streets and Kemp Street.

Local businesses have been asking for some changes to the timed parking and around the Wallsend CBD and I have been working with Council on looking at what changes can be made to improve parking so it will benefit our local economy.

I would encourage everyone to get their submissions in and have their say on the proposed parking changes by 5pm, Sunday, 12 July 2020.

<http://www.newcastle.nsw.gov.au/Have-Your-Say/Projects/Wallsend-proposed-parking-changes>

Wallsend Town Heroes and More Cafe Tempest The Colliery Inn Wallsend Opulence Hair and Makeup Wildflower Espresso Heng Loong Restaurant Fix It Physiotherapy Wallsend Vet Newcastle Newcastle Christmas Shop Top Thai Restaurant Wallsend Seafood & Takeaway Farnham's Butchery Wilsons Chemsave Pharmacy Custom Ink Tattooing Wallsend Village Pharmacy 4 Less Wallsend Yumm Thai Exclusive Wallsend The Lemon grove Wallsend Diggers & Mezz Bar The Flossery Pettigrew Family Funerals iGym 247 Wallsend Newcastle Float Centre Mulligan Property Group Aditi HAIR F45 Training Wallsend O'Hearn Lawyers Curves Wallsend Settlement Services International - SSI Firestation Hotel Wallsend Dental Surgery Early Start Speech Pathology Urban Raw Wallsend Picture Perfect Hair EyeMax EyeCare Sienna Rae Drop In Espresso Bar Maxi-Jazz Dance Studio Morgan Bikes, Wallsend 2287 Hiss & Crackle Records Divalinas Hairs Rok of Wallsend 4Cute Pathology Hb rehab & hb kids: Occupational Therapy, Physiotherapy Creative Property Art Mania Studio Local Hearing Aid Specialists Anytime Fitness



👍❤️ 51

64 Comments 24 Shares

👍 Like

💬 Comment

➦ Share



## Flyer and onsite signage

Traffic and Parking


# Proposed parking changes, Wallsend





Wallsend is a growing local centre currently undergoing renewal. City of Newcastle is investigating possible changes to the existing parking restrictions in this area in response to feedback from local businesses.

Following initial investigation, numerous changes are being proposed with the aim to best position Wallsend for medium to long-term development of the area under our Local Centres Plan.

Changes are being proposed in the following locations:

- Bunn Street
- Metcalfe & Murnin Streets
- Nelson Street
- Tyrrell Street
- William & Charles Streets
- Kemp Street.



To find out more about the changes and to have your say visit [www.newcastle.nsw.gov.au/yoursay](http://www.newcastle.nsw.gov.au/yoursay) before 12 July 2020.

For enquiries please call  
4974 2000  
[newcastle.nsw.gov.au](http://newcastle.nsw.gov.au)

Have  
your  
say

## Traffic and parking

## Bunn Street, Wallsend

# Proposed parking changes, Wallsend

Wallsend is a growing local centre currently undergoing renewal. City of Newcastle is investigating possible changes to the existing parking restrictions in this area in response to feedback from local businesses.

Following initial investigation, numerous changes are being proposed with the aim to best position Wallsend for medium to long-term development of the area under our Local Centres Plan.



To find out more about the changes and to have your say visit [www.newcastle.nsw.gov.au/yoursay](http://www.newcastle.nsw.gov.au/yoursay) before 12 July 2020.

For enquiries please call  
4974 2000

[newcastle.nsw.gov.au](http://newcastle.nsw.gov.au)

Bunn Street



## Traffic and parking

## Nelson Street, Wallsend

# Proposed parking changes, Wallsend

Wallsend is a growing local centre currently undergoing renewal. City of Newcastle is investigating possible changes to the existing parking restrictions in this area in response to feedback from local businesses.

Following initial investigation, numerous changes are being proposed with the aim to best position Wallsend for medium to long-term development of the area under our Local Centres Plan.

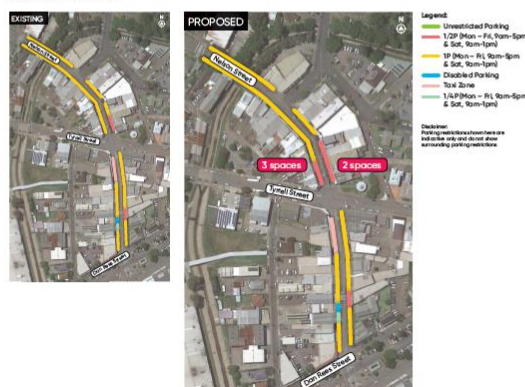


To find out more about the changes and to have your say visit [www.newcastle.nsw.gov.au/yoursay](http://www.newcastle.nsw.gov.au/yoursay) before 12 July 2020.

For enquiries please call  
4974 2000

[newcastle.nsw.gov.au](http://newcastle.nsw.gov.au)

Nelson Street





## Traffic and parking

## Tyrrell Street, Wallsend

# Proposed parking changes, Wallsend

Wallsend is a growing local centre currently undergoing renewal. City of Newcastle is investigating possible changes to the existing parking restrictions in this area in response to feedback from local businesses.

Following initial investigation, numerous changes are being proposed with the aim to best position Wallsend for medium to long-term development of the area under our Local Centres Plan.



To find out more about the changes and to have your say visit [www.newcastle.nsw.gov.au/yoursay](http://www.newcastle.nsw.gov.au/yoursay) before 12 July 2020.

For enquiries please call  
4974 2000

[newcastle.nsw.gov.au](http://newcastle.nsw.gov.au)

Tyrrell Street



**Legend**  
 1/2P (Mon – Fri, 9am–5pm & Sat, 9am–1pm)  
 1P (Mon – Fri, 9am–5pm & Sat, 9am–1pm)  
 Disabled Parking  
 Loading Zone

**Disclaimer:**  
 Parking restrictions shown here are indicative only and do not show surrounding parking restrictions.



## Traffic and parking

## William and Charles Streets, Wallsend

# Proposed parking changes, Wallsend

Wallsend is a growing local centre currently undergoing renewal. City of Newcastle is investigating possible changes to the existing parking restrictions in this area in response to feedback from local businesses.

Following initial investigation, numerous changes are being proposed with the aim to best position Wallsend for medium to long-term development of the area under our Local Centres Plan.



To find out more about the changes and to have your say visit [www.newcastle.nsw.gov.au/yoursay](http://www.newcastle.nsw.gov.au/yoursay) before 12 July 2020.

For enquiries please call  
4974 2000

[newcastle.nsw.gov.au](http://newcastle.nsw.gov.au)

William and Charles Streets



**Legend**  
 Unrestricted Parking  
 1/2P (Mon – Fri, 9am–5pm)  
 1P (Mon – Fri, 9am–5pm & Sat, 9am–1pm)  
 Disabled Parking

**Disclaimer:**  
 Parking restrictions shown here are indicative only and do not show surrounding parking restrictions.



## Traffic and parking

## Kemp Street and Carparks, Wallsend

# Proposed parking changes, Wallsend

Wallsend is a growing local centre currently undergoing renewal. City of Newcastle is investigating possible changes to the existing parking restrictions in this area in response to feedback from local businesses.

Following initial investigation, numerous changes are being proposed with the aim to best position Wallsend for medium to long-term development of the area under our Local Centres Plan.

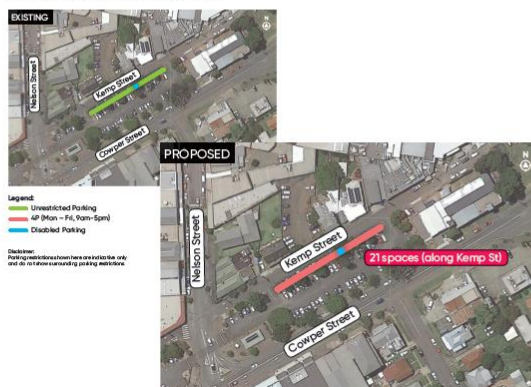


To find out more about the changes and to have your say visit [www.newcastle.nsw.gov.au/yoursay](http://www.newcastle.nsw.gov.au/yoursay) before 12 July 2020.

For enquiries please call  
**4974 2000**

[newcastle.nsw.gov.au](http://newcastle.nsw.gov.au)

## Kemp Street and Carparks



## Traffic and parking

## Metcalf and Murnin Streets, Wallsend

# Proposed parking changes, Wallsend

Wallsend is a growing local centre currently undergoing renewal. City of Newcastle is investigating possible changes to the existing parking restrictions in this area in response to feedback from local businesses.

Following initial investigation, numerous changes are being proposed with the aim to best position Wallsend for medium to long-term development of the area under our Local Centres Plan.



To find out more about the changes and to have your say visit [www.newcastle.nsw.gov.au/yoursay](http://www.newcastle.nsw.gov.au/yoursay) before 12 July 2020.

For enquiries please call  
**4974 2000**

[newcastle.nsw.gov.au](http://newcastle.nsw.gov.au)

## Metcalf and Murnin Streets



## Media coverage

Newcastle Herald – 16 June 2020

June 16 2020 - 12:52PM

### Council wants feedback on Wallsend parking changes



City of Newcastle is calling for feedback on its plans for more restricted parking in Wallsend to help increase traffic turnover.

The council proposes to introduce time limits on 58 parking spots in Bunn, William, Charles, Kemp, Metcalfe and Murnin streets and reduce time limits on nine spaces in Nelson and Tyrell streets.

The parking changes are designed to dovetail with the council's proposed Wallsend town centre upgrades, which have been in planning since 2015.

Wallsend state MP Sonia Hornery said the suburb's businesses had been asking for changes to parking time limits.

"Now, local businesses, residents and visitors to Wallsend can have their say on some ideas that council have put forward to improve the turnover of traffic in the area," she said.

"Wallsend is a growing local centre currently undergoing renewal, and the proposed parking changes aim to improve access to local businesses for residents and visitors and support upcoming work to revitalise the town centre."

The council is taking feedback on its website until July 12.

City of Newcastle replaced the Tyrell Street bridge over Ironbark Creek in March as part of its flood mitigation program for Wallsend.

It will start detailed design work next financial year on upgrading the Boscawen and Nelson street bridges.



## Appendix II – Online feedback form (survey)

# Wallsend proposed parking changes

## Survey introduction

*Instruction*

In response to feedback from local businesses, City of Newcastle is proposing changes to existing parking restrictions in several locations across the Wallsend town centre. The proposed changes are intended to improve the turnover of parking in Wallsend, to allow easier access to local businesses for residents and visitors. To find out more about the proposed parking changes and have your say, please click next.

## Areas of interest

### Changes overview

*Instruction*

The proposed parking changes in Wallsend involve introducing, or reducing the duration of, time restricted parking at various locations across the town centre.

### Single Choice Grid

*Single Choice Grid : Grid*

The proposed parking changes are summarised below. Please click to indicate which ones you'd like to find out more about and/or comment on.

- Interested
  - Not interested
  - Don't know
- 
- 1. Bunn Street (near Tyrrell Street) - change six unrestricted parking spaces to six 1-hour (1P) parking spaces
  - 2. Nelson Street (near Tyrrell Street) - change five 1-hour (1P) parking spaces to five 30-minute (1/2P) parking spaces
  - 3. Williams and Charles streets - change 27 unrestricted parking spaces to 27 4-hour (4P) parking spaces
  - 4. Tyrrell Street (near Nelson Street) - change four 1-hour (1P) parking spaces to four 30-minute (1/2P) parking spaces
  - 5. Kemp Street (near Nelson Street) - change 21 unrestricted parking spaces to 21 4-hour (4P) parking spaces
  - 6. Metcalfe and Murnin streets (near Cowper Street) - change four unrestricted parking spaces to four 2-hour (2P) parking spaces on each street

## Bunn Street

### Bunn logic

Display the questions if all of the following conditions are true:

- [This Survey] Single Choice Grid - 1. Bunn Street (near Tyrrell Street) - change six unrestricted parking spaces to six 1-hour (1P) parking spaces : is Interested OR Don't know

## Bunn Street

*Instruction*

CN is proposing to change six (6) existing parking spaces on the eastern side of Bunn Street (near Tyrrell Street) from unrestricted parking to 1-hour (1P) parking from 9am - 5pm Monday to Friday, and 9am - 1pm on Saturdays.If you can't view the map image, you can download the map file [here](#).

### Bunn support

*Single Choice Question : Buttons*

Do you agree with the proposed parking changes at Bunn Street, as outlined above?

- Yes
- No
- Don't know

### Bunn more 1P

*Single Choice Question : Buttons*

Would you like to see more 1-hour (1P) parking on Bunn Street?

- Yes
- No
- Don't know

### Bunn OE

*Open Ended : No Validation*

Please write in any other comments you have about parking on Bunn Street (near Tyrrell Street).If you would like to see more 1-hour (1P) parking in this area, please specify where.

- 

## Nelson Street

### Nelson logic

Display the questions if all of the following conditions are true:

- [This Survey] Single Choice Grid - 2. Nelson Street (near Tyrrell Street) - change five 1-hour (1P) parking spaces to five 30-minute (1/2P) parking spaces : is Interested OR Don't know

### Nelson Street

*Instruction*

CN is proposing to change five (5) existing parking spaces on the northern side of Nelson Street (near Tyrrell Street) from 1-hour (1P) parking to 30-minute (1/2P) parking from 9am - 5pm Monday to Friday, and 9am - 1pm on Saturdays.If you can't view the map image, you can download the map file [here](#).

### Nelson support

*Single Choice Question : Buttons*

Do you agree with the proposed parking changes at Nelson Street, as outlined above?

- Yes
- No
- Don't know

### Nelson more 1/2P



Would you like to see more 30-minute (1/2P) parking on Nelson Street?

- Yes
- No
- Don't know

### Nelson OE

*Open Ended : No Validation*

Please write in any other comments you have about parking on Nelson Street (near Tyrrell Street). If you would like to see more 30-minute (1/2P) parking in this area, please specify where

- 

## William and Charles Street

### William and Charles logic

Display the questions if all of the following conditions are true:

- [This Survey] Single Choice Grid - 3. Williams and Charles streets - change 27 unrestricted parking spaces to 27 4-hour (4P) parking spaces : is Interested OR Don't know

### William and Charles streets

*Instruction*

CN is proposing to change 15 existing parking spaces on the northern side of William Street, and 12 spaces on the northern side of Charles Street, from unrestricted parking to 4-hour (4P) parking from 9am - 5pm Monday to Friday. If you can't view the map image, you can download the map file [here](#).

### William support

*Single Choice Question : Buttons*

Do you agree with the proposed parking changes at William Street, as outlined above?

- Yes
- No
- Don't know

### Charles support

*Single Choice Question : Buttons*

Do you agree with the proposed parking changes at Charles Street, as outlined above?

- Yes
- No
- Don't know

### William and Charles OE

*Open Ended : No Validation*

Please write in any other comments you have about parking at William and Charles streets.

-

# Tyrrell Street

## Tyrrell logic

Display the questions if all of the following conditions are true:

- [This Survey] Single Choice Grid - 4. Tyrrell Street (near Nelson Street) - change four 1-hour (1P) parking spaces to four 30-minute (1/2P) parking spaces : is Interested OR Don't know

### Tyrrell Street

*Instruction*

CN is proposing to change four (4) existing parking spaces on Tyrrell Street (near Nelson Street) from 1-hour (1P) parking to 30-minute (1/2P) parking from 9am - 5pm Monday to Friday, and 9am - 1pm on Saturdays.If you can't view the map image, you can download the map file [here](#).

### Tyrrell support

*Single Choice Question : Buttons*

Do you agree with the proposed parking changes at Tyrrell Street, as outlined above?

- Yes
- No
- Don't know

### Tyrrell more 1/2P

*Single Choice Question : Buttons*

Would you like to see more 30-minute (1/2P) parking on Tyrrell Street?

- Yes
- No
- Don't know

### Tyrrell OE

*Open Ended : No Validation*

Please write in any other comments you have about parking on Tyrrell Street (near Nelson Street).If you would like to see more 30-minute (1/2P) parking in this area, please specify where

- 

# Kemp Street

## Kemp logic

Display the questions if all of the following conditions are true:

- [This Survey] Single Choice Grid - 5. Kemp Street (near Nelson Street) - change 21 unrestricted parking spaces to 21 4-hour (4P) parking spaces : is Interested OR Don't know

### Kemp Street

*Instruction*

CN is proposing to change 21 existing parking spaces on the southern side of Kemp Street (near Nelson Street) from unrestricted parking to 4-hour (4P) parking from 9am - 5pm Monday to Friday.If you can't view the map image, you can download the map file here.

### Kemp support

*Single Choice Question : Buttons*

Do you agree with the proposed parking changes at Kemp Street, as outlined above?

- Yes
- No
- Don't know

### Kemp OE

*Open Ended : No Validation*

Please write in any other comments you have about parking on Kemp Street (near Nelson Street).

•

## Metcalfe and Murnin logic

Display the questions if all of the following conditions are true:

- [This Survey] Single Choice Grid - 6. Metcalfe and Murnin streets (near Cowper Street) - change four unrestricted parking spaces to four 2-hour (2P) parking spaces on each street : is Interested OR Don't know

### Metcalfe and Murnin streets

*Instruction*

CN is proposing to change four (4) existing parking spaces on the eastern side of Metcalfe Street, and four (4) spaces on the eastern side of Murnin Street, from unrestricted parking to 2-hour (2P) parking from 9am - 5pm Monday to Friday, and 9am - 1pm on Saturdays.If you can't view the map image, you can download the map file here.

### Metcalfe support

*Single Choice Question : Buttons*

Do you agree with the proposed parking changes at Metcalfe Street, as outlined above?

- Yes
- No
- Don't know

### Murnin support

*Single Choice Question : Buttons*

Do you agree with the proposed parking changes at Murnin Street, as outlined above?

- Yes
- No

Don't know

### Metcalfe and Murnin OE

*Open Ended : No Validation*

Please write in any other comments you have about parking at Metcalfe and Murnin streets.

•

## Car parks

### Car parks (Converted)

Single Choice Grid : Grid

City of Newcastle current operates a number of off-street car parks across the Wallsend town centre. Please indicate what changes you'd like to see for parking restrictions at these locations. These restrictions, if introduced, would apply from 9am - 5pm Monday to Friday.

- No change - leave it as is
  - Change to 1-hour (1P)
  - Change to 2-hour (2P)
  - Change to 4-hour (4P)
  - Don't know
- 
- Kemp Street carpark - currently unrestricted parking
  - Dan Rees Street carpark - currently 2-hour (2P) parking
  - Council Street carpark - currently 2-hour (2P) parking
  - Harris Street carpark - currently unrestricted parking

### Carparks OE

Open Ended : No Validation

Please write in any other comments you have off-street City owned carparks in Wallsend.

•

## Demographics

### First name

Open Ended : No Validation

Please enter your first name

•

### Last name

Open Ended : No Validation

Please enter your last name

•

### Email

Open Ended : No Validation

Please enter your email address

•

### Age

Single Choice Question : Buttons

What is your age?

- 16-19
- 20-24
- 25-29

- 30-34
- 35-39
- 40-44
- 45-49
- 50-54
- 55-59
- 60-64
- 65-69
- 70-74
- 75+
- Prefer not to answer

## Gender

*Single Choice Question : Buttons*

**What is your gender?**

- Male
- Female
- Transgender/Intersex/Other
- Prefer not to answer

## LGA

*Single Choice Question : Buttons*

**Which local government area do you live in:**

- City of Newcastle
- Lake Macquarie City Council
- Other

## NCC logic

**Display the questions if all of the following conditions are true:**

- [This Survey] Demographics - Which local government area do you live in: : is City of Newcastle

### **Newcastle\_Suburb**

*Single Choice Question : Drop Down*

**Which suburb do you live in?**

- Adamstown
- Adamstown Heights
- Bar Beach
- Beresfield
- Birmingham Gardens
- Blackhill/ Lenaghan
- Broadmeadow
- Callaghan
- Carrington
- Cooks Hill
- Elmore Vale
- Fletcher
- Georgetown

- Hamilton
- Hamilton East
- Hamilton North
- Hamilton South
- Hexham
- Islington
- Jesmond
- Kooragang
- Kotara
- Lambton
- Maryland
- Maryville
- Mayfield
- Mayfield East
- Mayfield West
- Merewether
- Merewether Heights
- Minmi
- New Lambton
- New Lambton Heights
- Newcastle (CBD)
- Newcastle East
- Newcastle West
- North Lambton
- Rankin Park
- Sandgate
- Shortland
- Stockton
- Tarro
- The Hill
- The Junction
- Tighes Hill
- Wallsend
- Warabrook
- Waratah
- Waratah West
- Wickham

## End Survey

**Type of Termination Point:** Terminate

**Reason for Termination:** Complete

**Redirect to:** N/A

**Redirect URL:**

**Message to display to respondent:** Thank you for completing this survey. To find out more about upcoming work to revitalise Wallsend town centre, please visit our Wallsend Local Centre webpage. To have your say on other important projects, visit [newcastle.nsw.gov.au/YourSay](https://newcastle.nsw.gov.au/YourSay)

## Appendix III – Other submissions

Comments
<p>Suggest an increase in disability parking</p> <p>E.g. Northern end of Nelson Street between Tyrrell and Boscawen Streets</p> <p>Some in William or Charles streets</p>
<p>The customer is specifically concerned regarding the parking spaces on Bunn St, they do not support changes at this location as they are a family [REDACTED] who, if they cannot use the parking at this location, will be forced further afield to park their vehicles and are extremely unsatisfied by this. They note additionally that the unrestricted parking in the vicinity of their property is entirely used by all day parkers who work in Nelson St (allegedly the Centrelink building). [REDACTED] all of this pressure relates to the McDonalds at the corner of Kokera St and Cowper St being build/forbidding the use of their carpark, which has had a negative effect on parking behaviour in the area. Parting notes; they feel "residents always lose" in situations like this and the diggers club should make their parking available to the general public.</p>
<p>Please do not alter parking arrangements as many elderly residents need to be able to access adequate parking. We are extremely happy with current arrangements.</p>
<p>Regarding the proposed changes to parking in Wallsend;</p> <p>I request that you do not proceed with the changes proposed as the parking for residents is already challenging in the area. Concerns about parking were ignored when council considered the establishment of the Newcastle Mosque. Inadequate parking has resulted in an enormous amount of infringements to parking regulations weekly. My home in in front of the bus stop and near an intersection. I have reported to council on several occasions that each week, including photographic evidence that people are illegally parking in the bus stop and too close to intersection corners despite there being yellow lines to indicate safe parking areas.</p> <p>I encourage council to better police the existing parking arrangements in Wallsend rather than imposing further restrictions that will just make life more difficult for residents.</p>
<p>As I currently live on Bunn Street, I must say that it is incredibly hard to get a park in front of my house (given the other tenants car is in the driveway) and now the proposed changes would see me needing to move my car repeatedly until there is a car park on the other side of the street. That is unreasonable given that since the paid parking went in at the shopping centre, workers park all along the other side of the road for the whole day. When I work early mornings to the middle of the day up until 6pm, finding a park is ridiculous as it is. I drive around the block repeatedly. Many of the workers that park on the other side of the road will also take up more than one parking spot by parking right in the middle of the available parking area, as well as in front of my driveway.</p> <p>1 hour parking along that stretch of road, either side, will negatively impact the tenants who have to put up with the lack of parking (and parking skills) as is.</p> <p>Would be great if you could reconsider.</p>
<p>I am asking for you to take into consideration the parking around the Wallsend Village for the workers. If you change the length of parking this will impact on the workers. Our safety will strongly be impacted as we start &amp; finish at odd hours where its dark &amp; walking further is placing us ALL in harms way. We ask for the times on changes take this into consideration allow a time limit of 7 hrs or more during working hours 7 days a week - as the centre is open 7 days a week. Please help us stay safe.</p>

To whom it may concern

Hello I'm writing to you in regards to the parking around Wallsend Plaza.

I work in the plaza doing fulltime hours. Ive been there 20 years. I have always parked in the car park out the front and have never had a parking issue or complaint until recently they posted 3 hour parking in this car park and introduced boom gates at the back car park. So we were told to park in the maccas car park so we moved over there when we could. Now maccas have been sold and we are not allowed to park there anymore.

So we have been kicked to the street. Sometimes streets away from the plaza. Residents are complaining about cars parked in front of their homes all hours of the day and the streets are full and have trouble getting up and down those streets. I do not park in front of anybodies house. I park on the street with no houses in the area that i park.

I work for one of the [REDACTED] there and we have a couple hundred people day and night. Where on earth are we suppose to park if the parking limits are going to be introduced. Id like to go to work and not have to worry about my car and if my car has been hit or if i have a bloody parking ticket at the end of the day. I work hard to buy things i want in life. Not parking tickets if i go over the allocated time slot. Times are tough at the moment with covid. Im more worried about people coughing and splattering all over me then a parking ticket. We need a allocated parking area inside the car park with the boom gates up the back row like we used to have once upon a time. Make me pay an annual fee i don't give a shit really. Its for our safety as well... walking around Wallsend at dark time to get to my car is not my favourite past time.

Do you work in Wallsend? Do u have any idea what it's like there parking wise? I'm a customer when i finish work and dragging a trolley thru the uneven car park onto the streets is no way any fun to me or others and why should the trolley people have to track up and down streets looking for trolleys. We all just wanna do our jobs and not have to worry about parking issues. Don't you agree???

I seriously hope you take these emails on board and have a good think about how your messing up us essential workers over a stupid car space.

Thank you for your time. Hope to see a great outcome with these emails.

In relation to the proposed changes to parking in Wallsend. I am located in the changes that will effect Murnin Street.

I live in Number [REDACTED], which in this proposal, has had the parking directly out front changed to a 2 hour limit.

It's disappointing to see this proposed change as my family won't have the ability to park out the front of the building we own without risk of penalty the next day should we not move our car.

There needs to either be residential parking permitted for those homes you're directly effecting or removal the proposed changes.

[REDACTED] called to pass over his feedback for the four new proposed parking spaces in Metcalfe Street, Wallsend. [REDACTED] advised he believes one will be located where the footpath is marked which is right in front of a heritage listed property ([REDACTED] Metcalfe Street, Wallsend). He also advised they are in front of properties that have levy's on rates that go towards the upkeep of business premises on Nelson Street. Described it as "a bit rich".

We have our [REDACTED] on Metcalfe Street Wallsend.

Our parking with vehicles is very limited. We have no choice but to park vehicles on the street at times with us being so busy. Some customers are not able to [REDACTED] till later stages in the day make it difficult as well as they are also at work. [REDACTED]. Fridays being the worst with prayer at the mosque. It's like Pitt Street here.



If there is 2 hour parking on Metcalfe Street it's really going to affect our business. We will constantly be booked for vehicles in front of our shop as we have nowhere to put them.

If you have any suggestions, I would surely appreciate it, Thank you kindly.

As the owners of the [REDACTED] we would like to see a Loading Zone applied [REDACTED] in METCALFE Street from 7am-3pm daily, Monday to Friday. We have numerous deliveries each day and if the parking outside is taken up (often by local employees who park there all day) it becomes a very difficult and sometimes dangerous for the drivers , who have to park across the road and manoeuvre the traffic to get into our hotel. Also our [REDACTED] trucks have to double park in order to access our cellar.

We also would like to see the 2 hour parking extended in METCALFE street from Cowper to Campbell street. We can be contacted by return email or my mobile [REDACTED] should you require any further information .

The customer would prefer loading zone instead of the proposed 2P parking, to better facilitate their businesses operations once the existing LZ on Cowper St is removed as part of the planned upgrade of Cowper St.